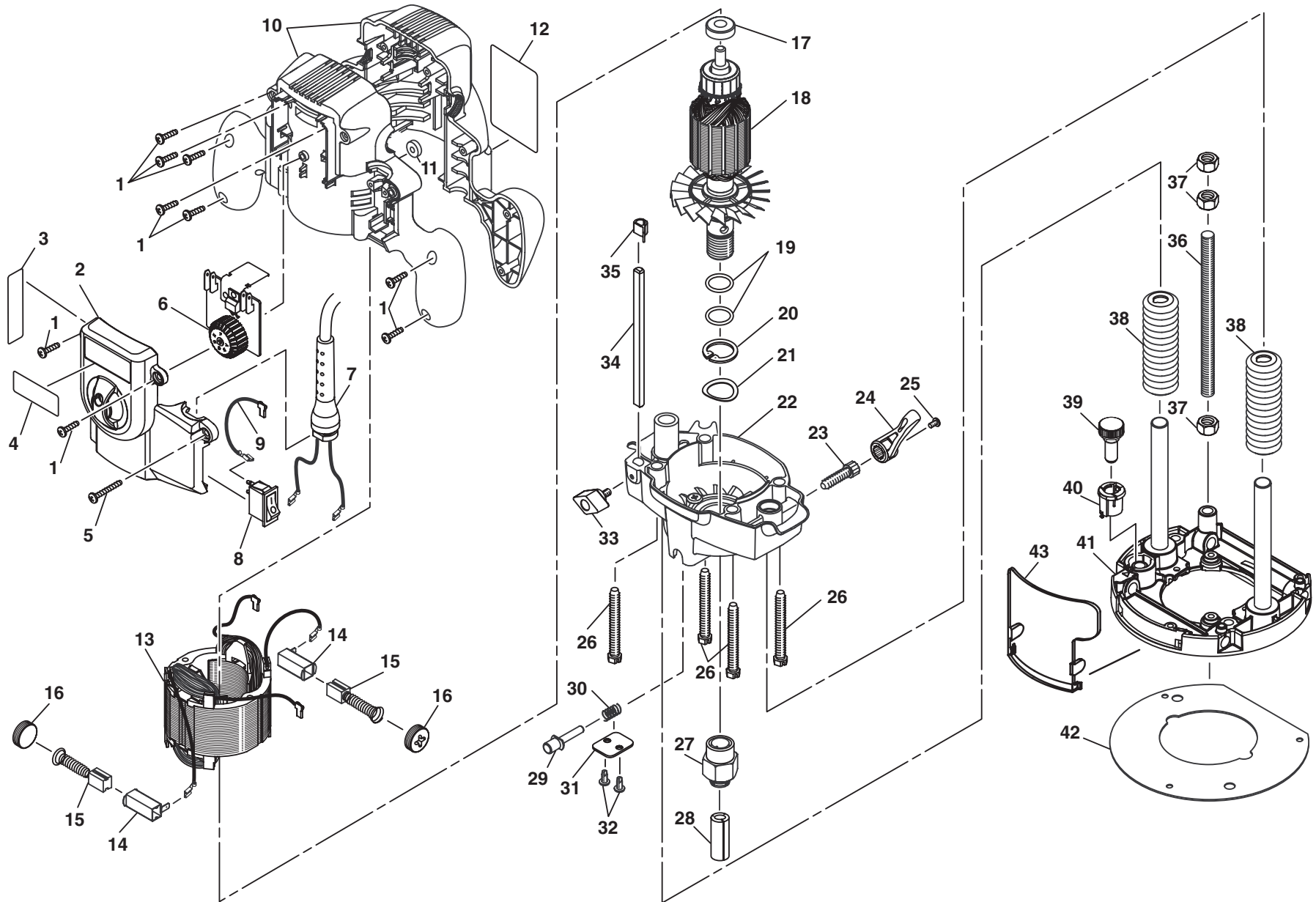


RYOBI
ROUTER
MODEL NO. RE180PL1
REPAIR SHEET

RYOBI ROUTER – MODEL NUMBER RE180PL1



WARNING: Improper repair of a double insulated tool can result in damages to the double insulation system possibly causing electrical shock or electrocution. Any repairs requiring disassembly of your tool requires safety testing and should only be performed by a Ryobi Authorized Service Center. For the service center nearest you call 1-800-525-2579.

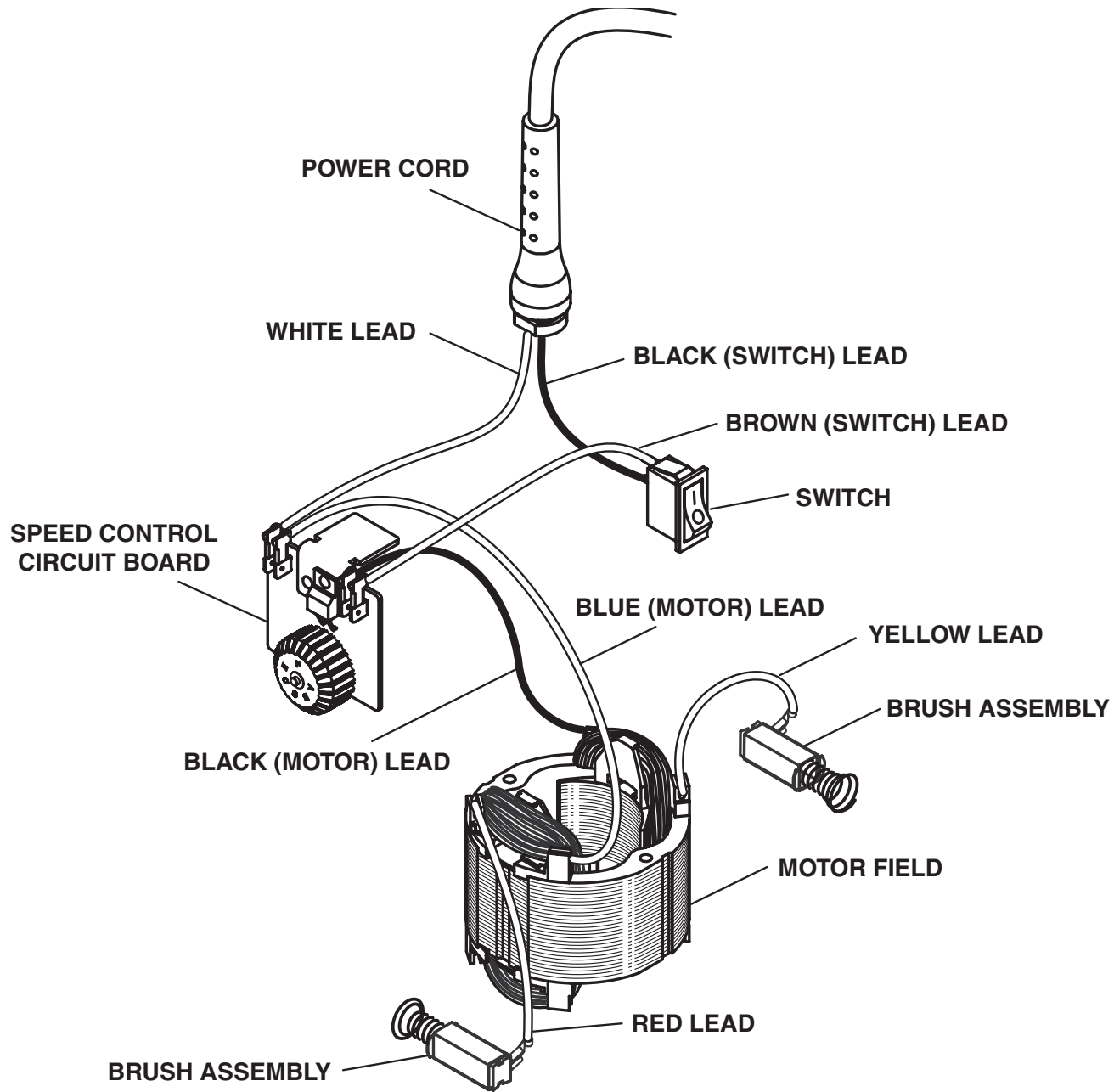
RYOBI ROUTER – MODEL NUMBER RE180PL1

The model number will be found on a plate attached to the motor housing. Always mention the model number in all correspondence regarding your **ROUTER** or when ordering repair parts.

PARTS LIST

| Key No. | Part Number | Description | Qty. | Key No. | Part Number | Description | Qty. |
|---------|-------------|----------------------------------|------|---------|-------------|------------------------------------|------|
| 1 | 660161001 | SCREW (8-10 X 5/8 in. PAN HD.) | 9 | 25 | 660284003 | SCREW (6-32 X 1/4 in. PAN HD.) | 1 |
| 2 | 380847001 | SPEED CONTROL COVER | 1 | 26 | 660309002 | SCREW (1/4-15 X 1-3/4 in. PAN HD.) | 4 |
| 3 | 940299510 | SCALE LABEL | 1 | 27 | 300627004 | COLLET ASSEMBLY (1/2 in.) | 1 |
| 4 | 940263112 | LOGO PLATE | 1 | 28 | 670344005 | COLLET ADAPTOR (1/4 in.) | 1 |
| 5 | 660155004 | SCREW (8-10 X 1-1/4 in. PAN HD.) | 1 | 29 | 670342001 | SHAFT LOCK PIN | 1 |
| 6 | 300626004 | SPEED CONTROL ASSEMBLY | 1 | 30 | 690141001 | SHAFT LOCK SPRING | 1 |
| 7 | 290086016 | CORD | 1 | 31 | 630005001 | SHAFT LOCK COVER PLATE | 1 |
| 8 | 760357001 | ROCKER SWITCH | 1 | 32 | 660325001 | SCREW (10-32 X 3/8 in. WAFER HD.) | 2 |
| 9 | 290061053 | LEAD | 1 | 33 | 550854001 | LOCK KNOB | 1 |
| 10 | 200202149 | HOUSING ASSEMBLY | 1 | 34 | 620168001 | STOP BAR | 1 |
| 11 | 550408001 | STATOR PAD | 1 | 35 | 380855001 | POINTER | 1 |
| 12 | 940301019 | DATA PLATE | 1 | 36 | 670341001 | DEPTH ADJUSTING ROD | 1 |
| 13 | 200215005 | FIELD | 1 | 37 | 660163002 | HEX NUT (3/8-16) | 3 |
| 14 | 671295001 | BRUSH TUBE | 2 | 38 | 300524002 | BELLOWS ASSEMBLY | 2 |
| 15 | 200233002 | BRUSH SET | 1 | 39 | 200240001 | DEPTH STOP KNOB | 1 |
| 16 | 550853001 | BRUSH CAP | 2 | 40 | 380852001 | GAGE CAP | 1 |
| 17 | 680966001 | BALL BEARING | 1 | 41 | 300624001 | BASE ASSEMBLY | 1 |
| 18 | 740615001 | ARMATURE | 1 | 42 | 550850001 | SUBBASE | 1 |
| 19 | 560746001 | O RING | 2 | 43 | 550848001 | CHIP SHIELD | 1 |
| 20 | 680370001 | RETAINING RING | 1 | | 670346001 | WRENCH | 1 |
| 21 | 670343001 | SPRING WASHER | 1 | | 983000448 | OPERATOR'S MANUAL (960931002) | |
| 22 | 200239001 | BEARING FRAME | 1 | | 983000448R | REPAIR SHEET (REV:01) | |
| 23 | 660009001 | PLUNGE LOCK SCREW | 1 | | 03-30-05 | | |
| 24 | 550849001 | PLUNGE LOCK LEVER | 1 | | | | |

RYOBI ROUTER – MODEL NUMBER RE180PL1



WIRING DIAGRAM