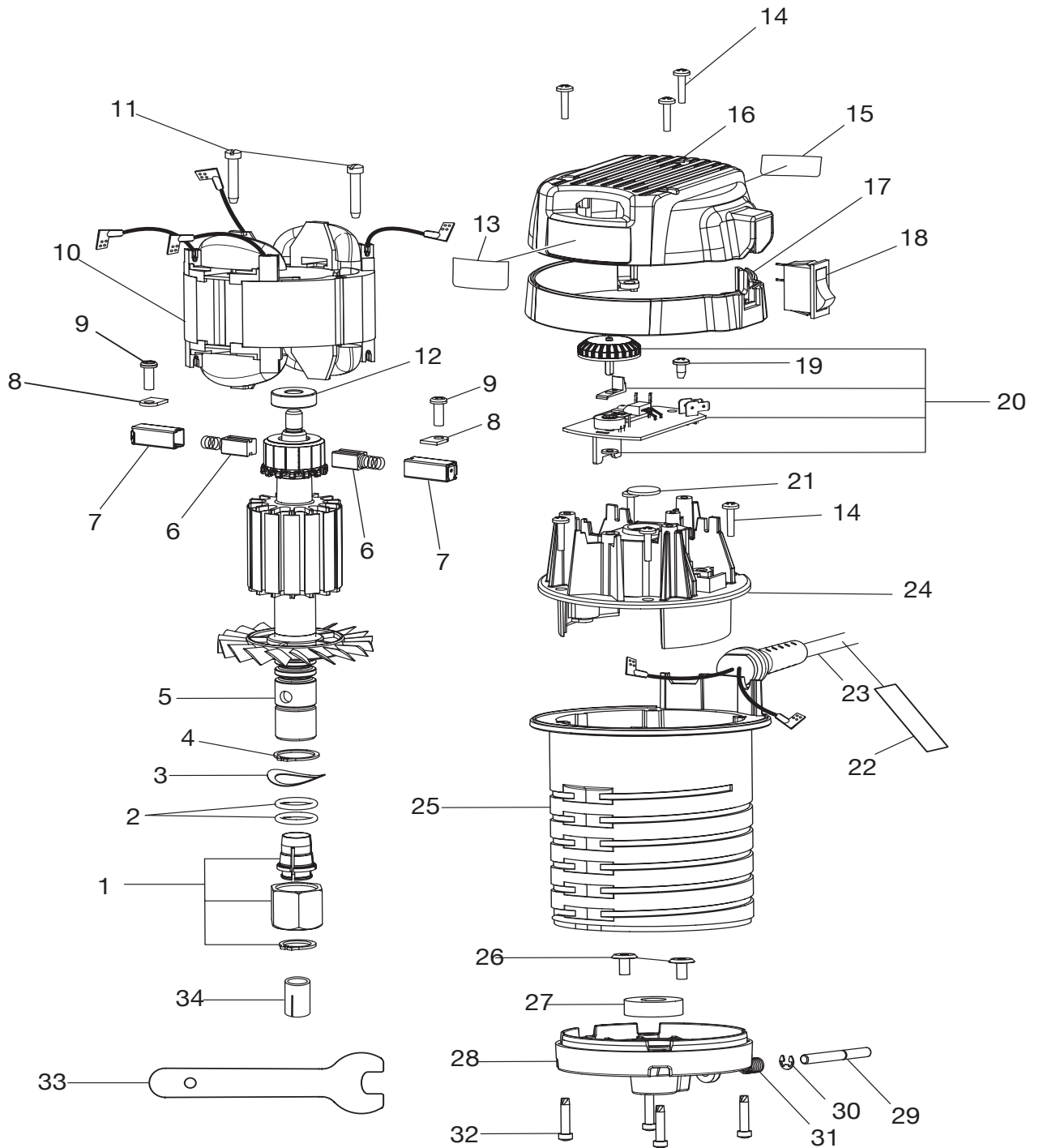


**RYOBI RE1803BK  
ROUTER  
MODEL NOS.  
RE1802M, R181FB, R181PF, R181D  
REPAIR SHEET**

# RYOBI ROUTER MOTOR - MODEL NUMBER RE1802M



**WARNING:** Improper repair of a double insulated tool can result in damages to the double insulation system possibly causing electrical shock or electrocution. Any repairs requiring disassembly of your tool requires safety testing and should only be performed by a Ryobi Authorized Service Center. For the service center nearest you call 1-800-525-2579.

## RYOBI ROUTER MOTOR – MODEL NUMBER RE1802M

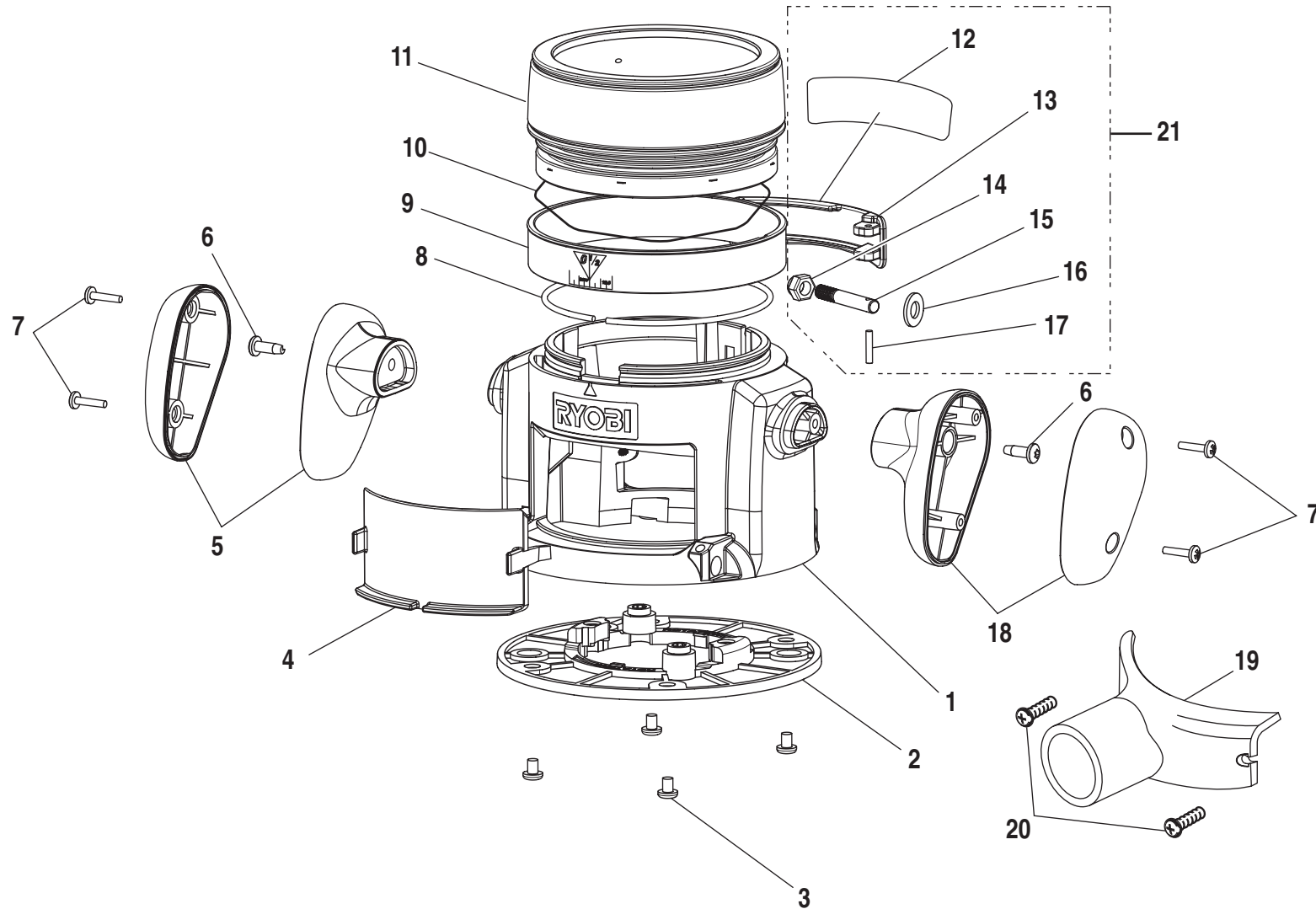
The model number will be found on a plate attached to the motor housing. Always mention the model number in all correspondence regarding your **ROUTER** or when ordering repair parts.

### PARTS LIST

KEY NO.	PART NUMBER	DESCRIPTION	QTY.
1	982890-001	COLLET ASSEMBLY .....	1
2	969313-001	O RING .....	1
3	622347-018	SPRING WASHER .....	1
4	617932-002	RETAINING RING .....	1
5	982978-001	ARMATURE .....	1
6	610784-064	BRUSH W/SPRING .....	2
7	611686-003	BRUSH TUBE .....	2
8	617800-002	BRUSH TUBE CLAMP .....	2
9	968702-007	* SCREW (8-16 x 1/2 in. PAN HD.) .....	2
10	982729-001	FIELD .....	1
11	983048-171	* SCREW (10-16 X 1 in. FIL. HD.) .....	2
12	986294-003	BALL BEARING .....	1
13	982722-001	LOGO PLATE .....	1
14	617966-031	* SCREW (8-10 X 3/4 in. PAN HD.) .....	7
15	983415-001	DATA PLATE .....	1
16	983303-001	UPPER TOP CAP .....	1
17	983304-001	LOWER TOP CAP .....	1
18	982379-002	ROCKER SWITCH .....	1
19	968700-004	* SCREW (6-19 X 5/16 in. PAN HD) .....	1
20	983473-001	SPEED CONTROL ASSEMBLY .....	1
21	982974-001	INSULATOR .....	1
22	983462-001	CORD TAG .....	1
23	970777-030	CORD .....	1
24	982950-001	TOP BEARING PLATE .....	1
25	982951-001	MOTOR HOUSING .....	1
26	998401-001	* SCREW (10-32 x 3/8 in. WAFER HD.) .....	2
27	098460-041	BALL BEARING .....	1
28	982952-002	BEARING HOUSING .....	1
29	982959-004	SHAFT LOCK PIN .....	1
30	982899-014	E-RING .....	1
31	982716-001	SPRING .....	1
32	643526-006	* SCREW (8-18 X 3/4 in. PAN HD.) .....	4
33	982889-001	15/16 in. WRENCH .....	1
34	983579-001	1/4 in. ADAPTER .....	1
	983000-015	OPERATOR'S MANUAL	
	983000-015R	REPAIR SHEET (REV:00)	
	02-10-05		

**\* Standard Hardware Item – May Be Purchased Locally**

# RYOBI ROUTER FIXED BASE - MODEL NUMBER R181FB



**WARNING:** Improper repair of a double insulated tool can result in damages to the double insulation system possibly causing electrical shock or electrocution. Any repairs requiring disassembly of your tool requires safety testing and should only be performed by a Ryobi Authorized Service Center. For the service center nearest you call 1-800-525-2579.

**RYOBI ROUTER FIXED BASE – MODEL NUMBER R181FB**

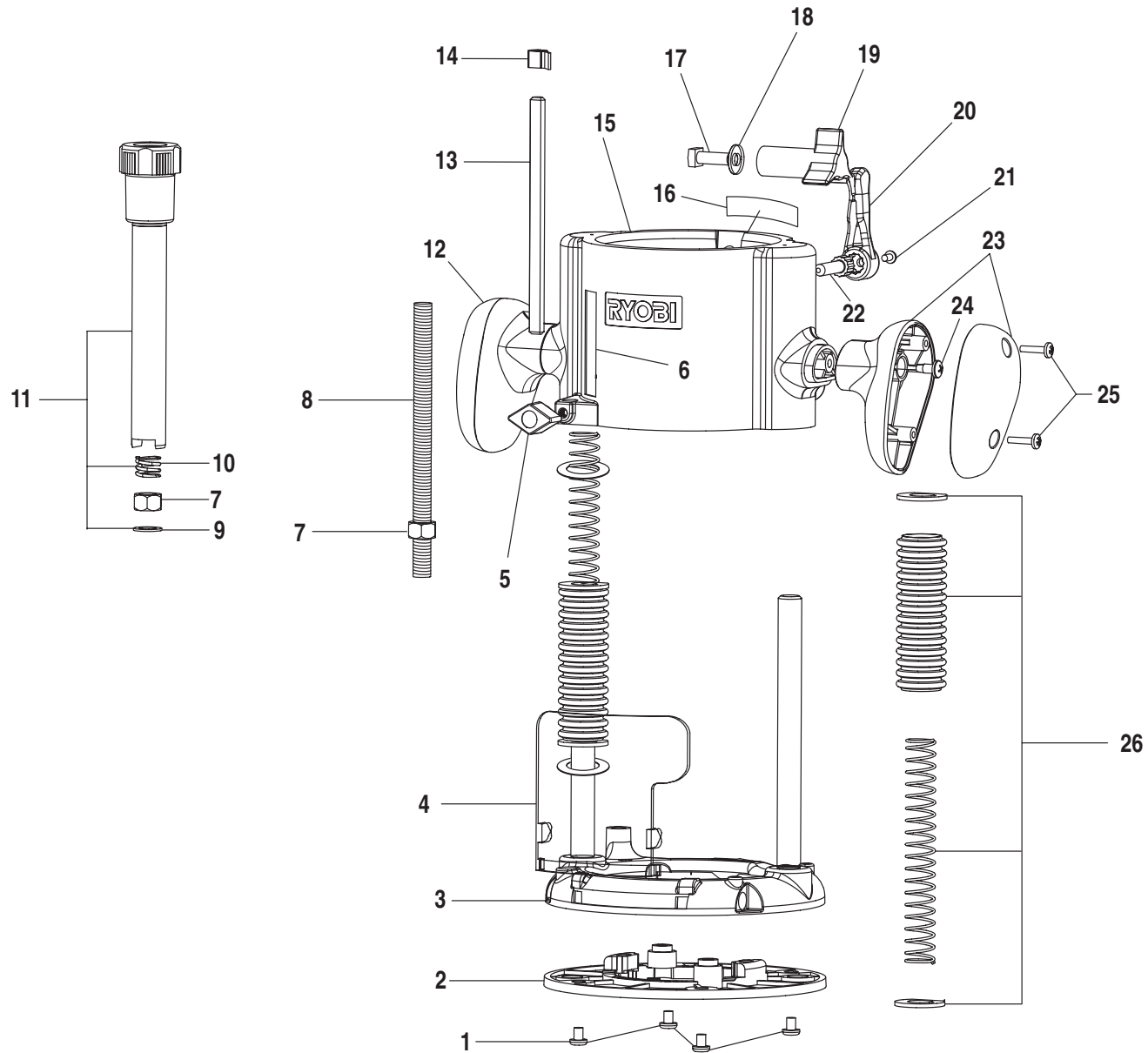
The model number will be found on a plate attached to the base. Always mention the model number in all correspondence regarding your **ROUTER** or when ordering repair parts.

**PARTS LIST**

<b>KEY NO.</b>	<b>PART NUMBER</b>	<b>DESCRIPTION</b>	<b>QTY.</b>
1	983305-201	BASE W/PIN.....	1
2	983306-201	SUBBASE W/INSERTS .....	1
3	998586-001	* SCREW (10-32 X 1/4 in. PAN HD.).....	4
4	983308-001	CHIP SHIELD .....	1
5	982991-001	HANDLE ASSEMBLY.....	1
6	983699-128	* SCREW (10-24 X 9/16 in. TORX PAN HD.).....	2
7	617966-030	* SCREW (8-10 X 5/8 in. PAN HD.).....	4
8	983689-001	SPLINE .....	1
9	983422-001	ZERO RESET RING.....	1
10	984673-001	RESET RING SPRING .....	1
11	983307-001	DEPTH ADJUSTMENT RING .....	1
12	983463-001	INFORMATION PLATE.....	1
13	983451-201	LEVER W/INFORMATION PLATE (INCLUDES KEY NO. 12) .....	1
14	703477-057	* HEX LOCK NUT (1/4-20) .....	1
15	982972-001	LEVER PIN.....	1
16	706382-357	WASHER .....	1
17	982948-032	NEEDLE ROLLER PIN .....	1
18	983474-001	RIGHT HANDLE SET .....	1
19	974785-003	DUST NOZZLE (INCLUDES KEY NO. 20) .....	1
20	643115-005	* SCREW (6-32 x 3/8 in. PAN HD.) .....	2
21	000727007	LOCK LEVER REPAIR KIT (INCLUDES KEY NOS. 12-17) .....	1

**\* Standard Hardware Item – May Be Purchased Locally**

# RYOBI ROUTER PLUNGE FRAME - MODEL NUMBER R181PF



**WARNING:** Improper repair of a double insulated tool can result in damages to the double insulation system possibly causing electrical shock or electrocution. Any repairs requiring disassembly of your tool requires safety testing and should only be performed by a Ryobi Authorized Service Center. For the service center nearest you call 1-800-525-2579.

## RYOBI ROUTER PLUNGE FRAME – MODEL NUMBER R181PF

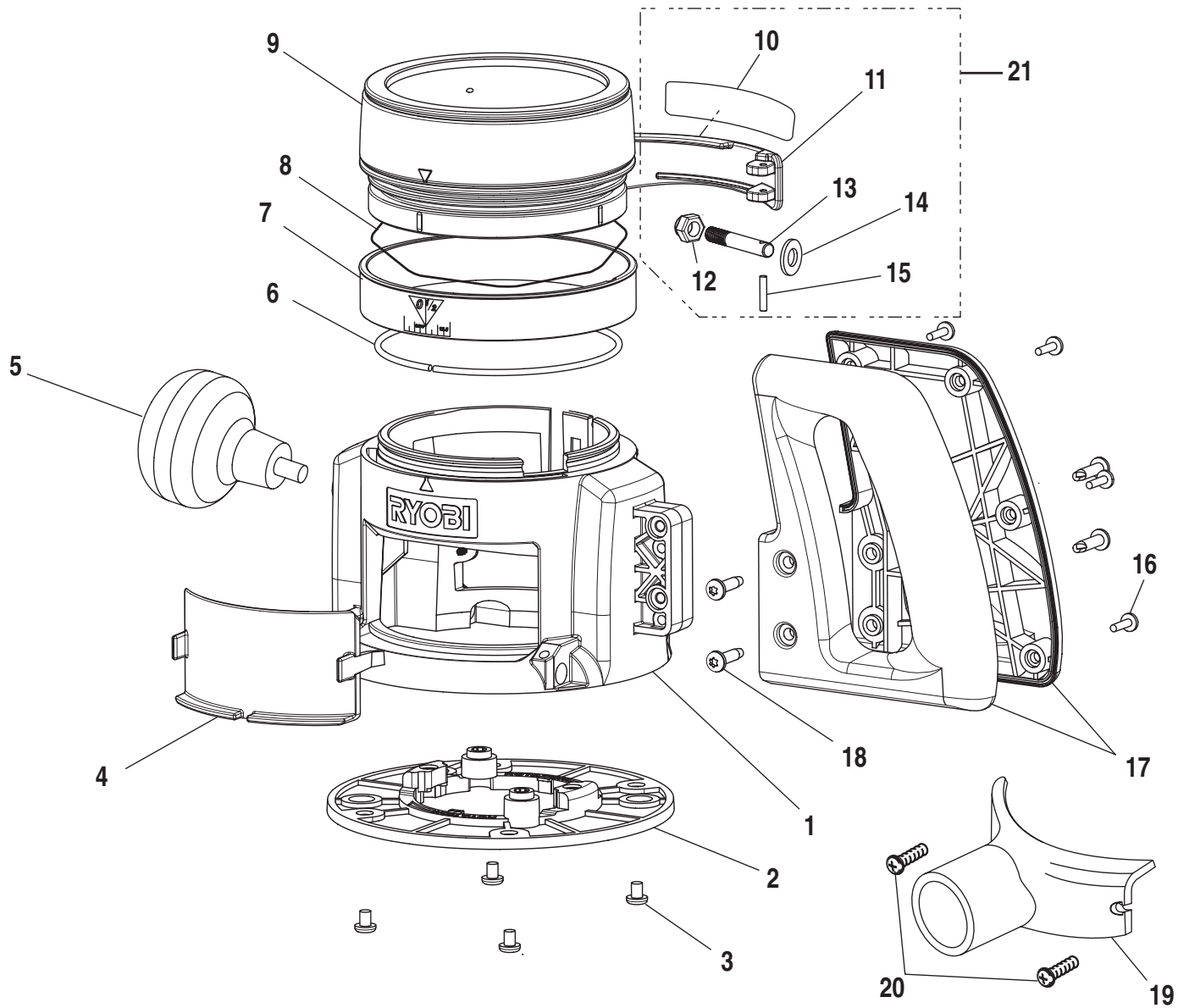
The model number will be found on a plate attached to the base. Always mention the model number in all correspondence regarding your **ROUTER** or when ordering repair parts.

### PARTS LIST

KEY NO.	PART NUMBER	DESCRIPTION	QTY.
1	998586-001	* SCREW (10-32 X 1/4 in. PAN HD.).....	4
2	983306-201	SUBBASE W/INSERTS .....	1
3	983310-201	BASE W/RODS .....	1
4	972265-002	CHIP SHIELD .....	1
5	982711-001	STOP BAR KNOB .....	1
6	982713-001	SCALE LABEL.....	1
7	607406-005	* HEX NUT (3/8-16) .....	2
8	970732-005	DEPTH ADJUSTMENT ROD.....	1
9	703493-820	WASHER.....	1
10	971137-001	COMPRESSION SPRING .....	1
11	975220-001	DEPTH ADJUSTMENT KNOB (INCLUDES KEY NOS. 9 AND 10).....	1
12	982991-001	HANDLE ASSEMBLY .....	1
13	982710-001	DEPTH STOP BAR.....	1
14	982712-001	POINTER.....	1
15	983309-201	PLUNGE FRAME W/BEARINGS.....	1
16	983414-001	INFORMATION PLATE .....	1
17	623166-007	* BOLT (1/4-20 X 3/8 in. SQ. HD.) .....	1
18	931744-059	FLAT WASHER.....	2
19	999603-001	LOCKING KNOB .....	1
20	982701-001	PLUNGE LOCK LEVER.....	1
21	643115-004	* SCREW (6-32 X 1/4 in. PAN HD.).....	1
22	982702-001	PLUNGE LOCK SCREW .....	1
23	983474-001	RIGHT HANDLE SET .....	1
24	983699-128	* SCREW (10-24 X 9/16 in. TORX PAN HD.) .....	2
25	617966-030	* SCREW (8-10 X 5/8 in. PAN HD.).....	4
26	300524002	PLUNGE SPRING ASSEMBLY.....	2

**\* Standard Hardware Item – May Be Purchased Locally**

# RYOBI ROUTER D HANDLE - MODEL NUMBER R181D



**WARNING:** Improper repair of a double insulated tool can result in damages to the double insulation system possibly causing electrical shock or electrocution. Any repairs requiring disassembly of your tool requires safety testing and should only be performed by a Ryobi Authorized Service Center. For the service center nearest you call 1-800-525-2579.



## RYOBI ROUTER D HANDLE – MODEL NUMBER R181D

The model number will be found on a plate attached to the base. Always mention the model number in all correspondence regarding your **ROUTER** or when ordering repair parts.

### PARTS LIST

KEY NO.	PART NUMBER	DESCRIPTION	QTY.
1	984170-001	D-HANDLE BASE .....	1
2	983306-201	SUBBASE W/ INSERTS.....	1
3	998586-001	* SCREW (10-32 X 1/4 in. PAN HD.) .....	4
4	983308-001	CHIP SHIELD.....	1
5	983506-001	KNOB.....	1
6	983689-001	SPLINE .....	1
7	983422-001	ZERO RESET RING .....	1
8	984673-001	RESET RING SPRING .....	1
9	983307-001	DEPTH ADJUSTMENT RING.....	1
10	983958-001	INFORMATION PLATE.....	1
11	983451-206	LEVER W/INFORMATION PLATE (INCLUDES KEY NO. 10) .....	1
12	703477-057	HEX LOCK NUT (1/4-20) .....	1
13	982972-001	LEVER PIN.....	1
14	706382-357	WASHER.....	1
15	982948-032	PIN NEEDLE ROLLER .....	1
16	617966-028	* SCREW ( 8-10 X 1/2 in. PAN HD.) .....	4
17	984171-001	D-HANDLE.....	1
18	983699-128	* SCREW (10-24 X 9/16 in. TORX PAN HD.).....	4
19	974785-003	DUST NOZZLE (INCLUDES KEY NO. 20) .....	1
20	643115-005	* SCREW (6-32 X 3/8 in. PAN HD.) .....	2
21	000727006	LOCK LEVER REPAIR KIT (INCLUDES KEY NOS. 10-15) .....	1

**\* Standard Hardware Item – May Be Purchased Locally**