

RYOBI RE1803-1BK

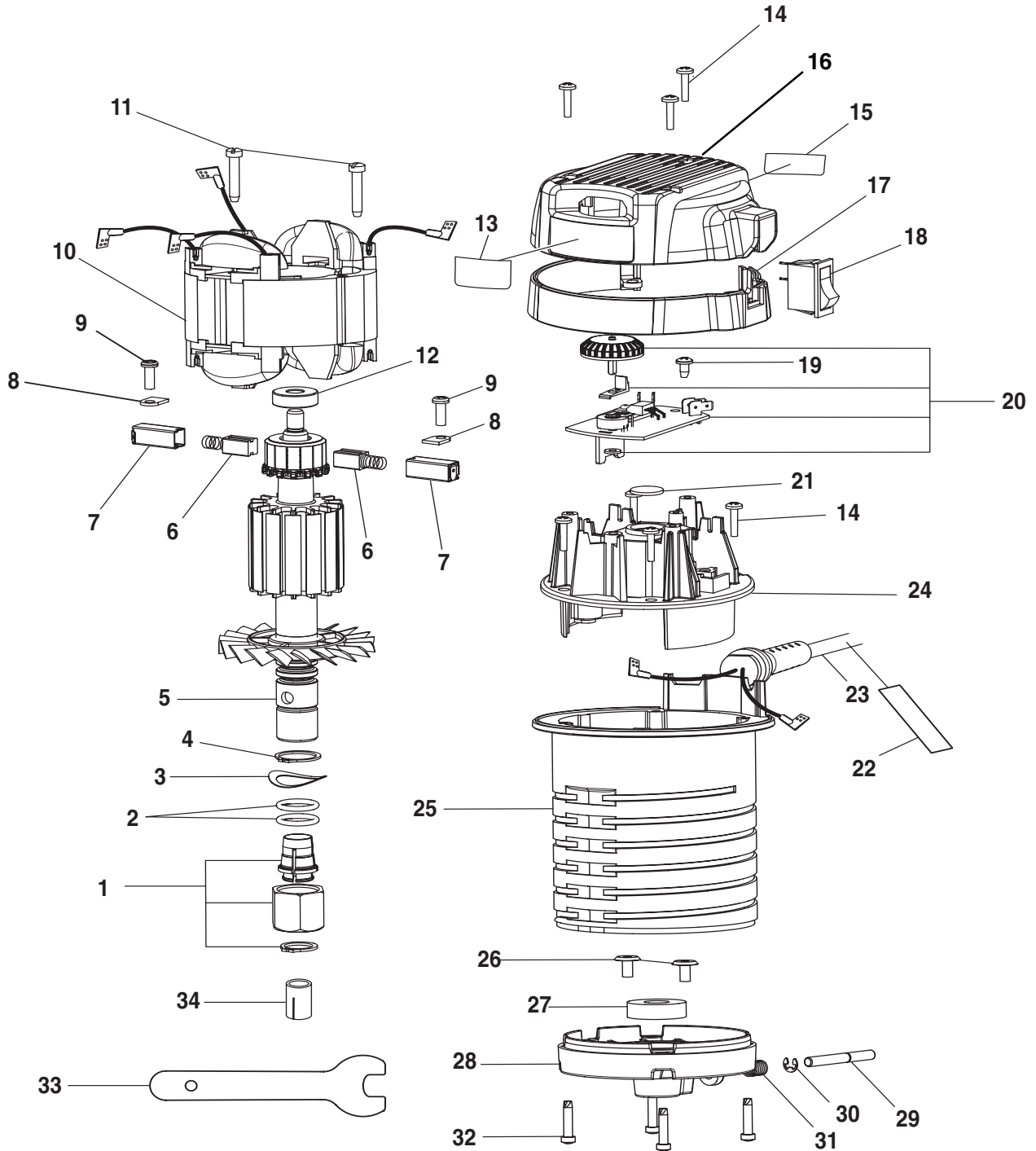
ROUTER

MODEL NOS.

RE1802M1, R181FB1, R181PB1, R181DB1

REPAIR SHEET

RYOBI ROUTER MOTOR – MODEL NUMBER RE1802M1



WARNING: Improper repair of a double insulated tool can result in damages to the double insulation system possibly causing electrical shock or electrocution. Any repairs requiring disassembly of your tool requires safety testing and should only be performed by a Ryobi Authorized Service Center. For the service center nearest you call 1-800-525-2579.

RYOBI ROUTER MOTOR – MODEL NUMBER RE1802M1

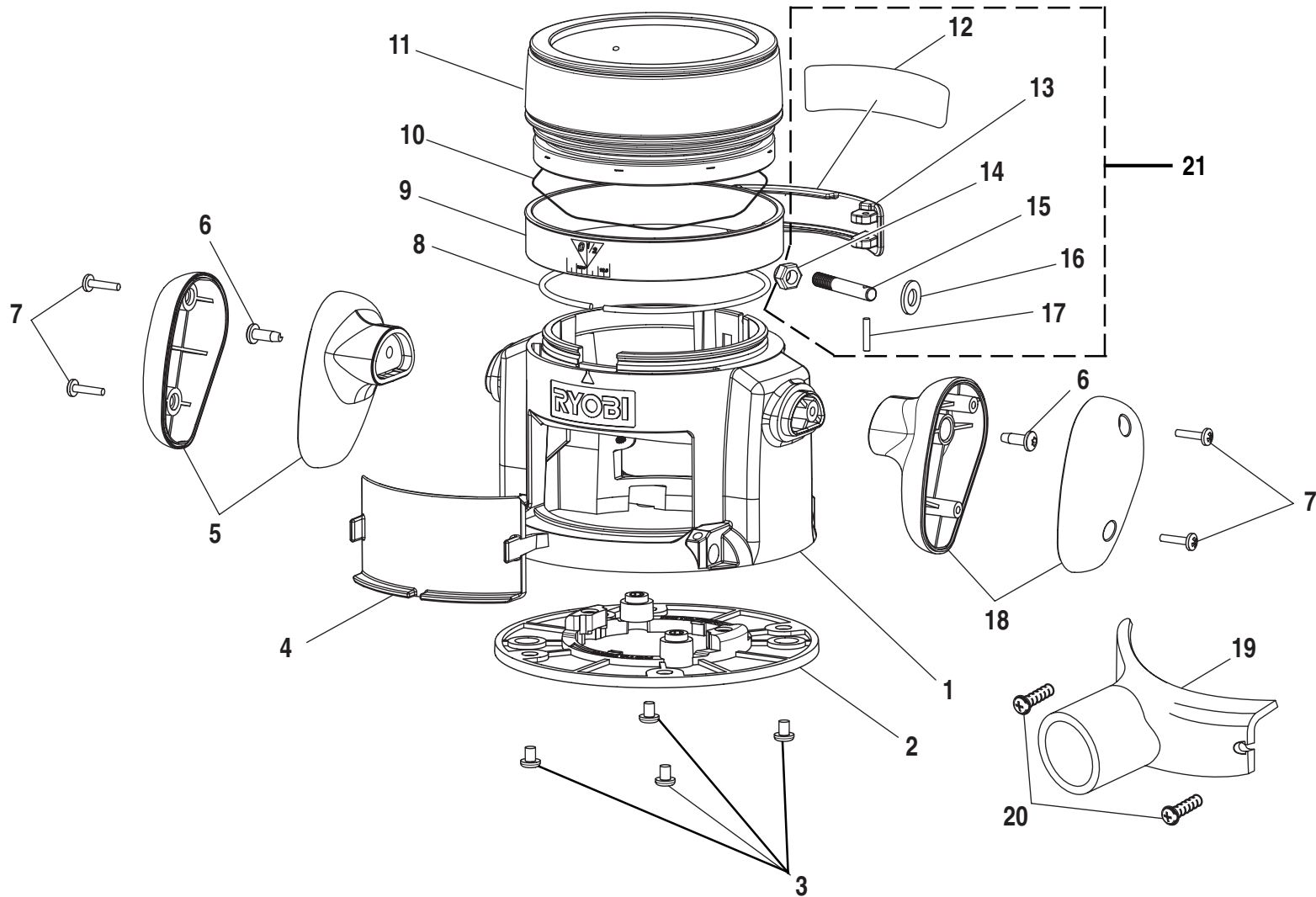
The model number will be found on a plate attached to the motor housing. Always mention the model number in all correspondence regarding your **ROUTER** or when ordering repair parts.

PARTS LIST

KEY NO.	PART NUMBER	DESCRIPTION	QTY.
1	300627004	COLLET ASSEMBLY	1
2	560746001	O RING	2
3	670343001	SPRING WASHER	1
4	680370001	RETAINING RING	1
5	740608001	ARMATURE	1
6	200233001	BRUSH W/SPRING	2
7	630081001	BRUSH TUBE	2
8	630801001	BRUSH TUBE CLAMP	2
9	660138001	* SCREW (8-16 x 1/2 in. PAN HD.)	2
10	200215005	FIELD ASSEMBLY	1
11	660062004	* SCREW (10-16 X 1 in. TYPE B SLOTTED)	2
12	680966001	BALL BEARING	1
13	940263112	LOGO PLATE	1
14	660103001	* SCREW (8-10 X 3/4 in. PAN HD.)	7
15	940301022	DATA PLATE	1
16	512018001	UPPER TOP CAP	1
17	342019001	LOWER TOP CAP	1
18	760357001	ROCKER SWITCH	1
19	660182003	* SCREW (6-19 X 5/16 in. PAN HD)	1
20	200238003	SPEED CONTROL ASSEMBLY	1
21	900924001	INSULATOR	1
22	940299509	CORD TAG	1
23	730377006	CORD	1
24	511982001	TOP BEARING PLATE	1
25	511986001	MOTOR HOUSING	1
26	660324001	* SCREW (10-32 x 3/8 in. WAFER HD.)	2
27	680733002	BALL BEARING	1
28	640673001	BEARING HOUSING	1
29	671249001	SHAFT LOCK PIN	1
30	671245001	E-RING	1
31	690141001	SPRING	1
32	660133007	* SCREW (8-18 X 3/4 in. PAN HD.)	4
33	670346001	15/16 in. WRENCH	1
34	670344005	1/4 in. COLLET ADAPTER	1
	983000-447	OPERATOR'S MANUAL	
	983000-447R	REPAIR SHEET	

*** Standard Hardware Item – May Be Purchased Locally**

RYOBI ROUTER FIXED BASE – MODEL NUMBER R181FB1



WARNING: Improper repair of a double insulated tool can result in damages to the double insulation system possibly causing electrical shock or electrocution. Any repairs requiring disassembly of your tool requires safety testing and should only be performed by a Ryobi Authorized Service Center. For the service center nearest you call 1-800-525-2579.

RYOBI ROUTER FIXED BASE – MODEL NUMBER R181FB1

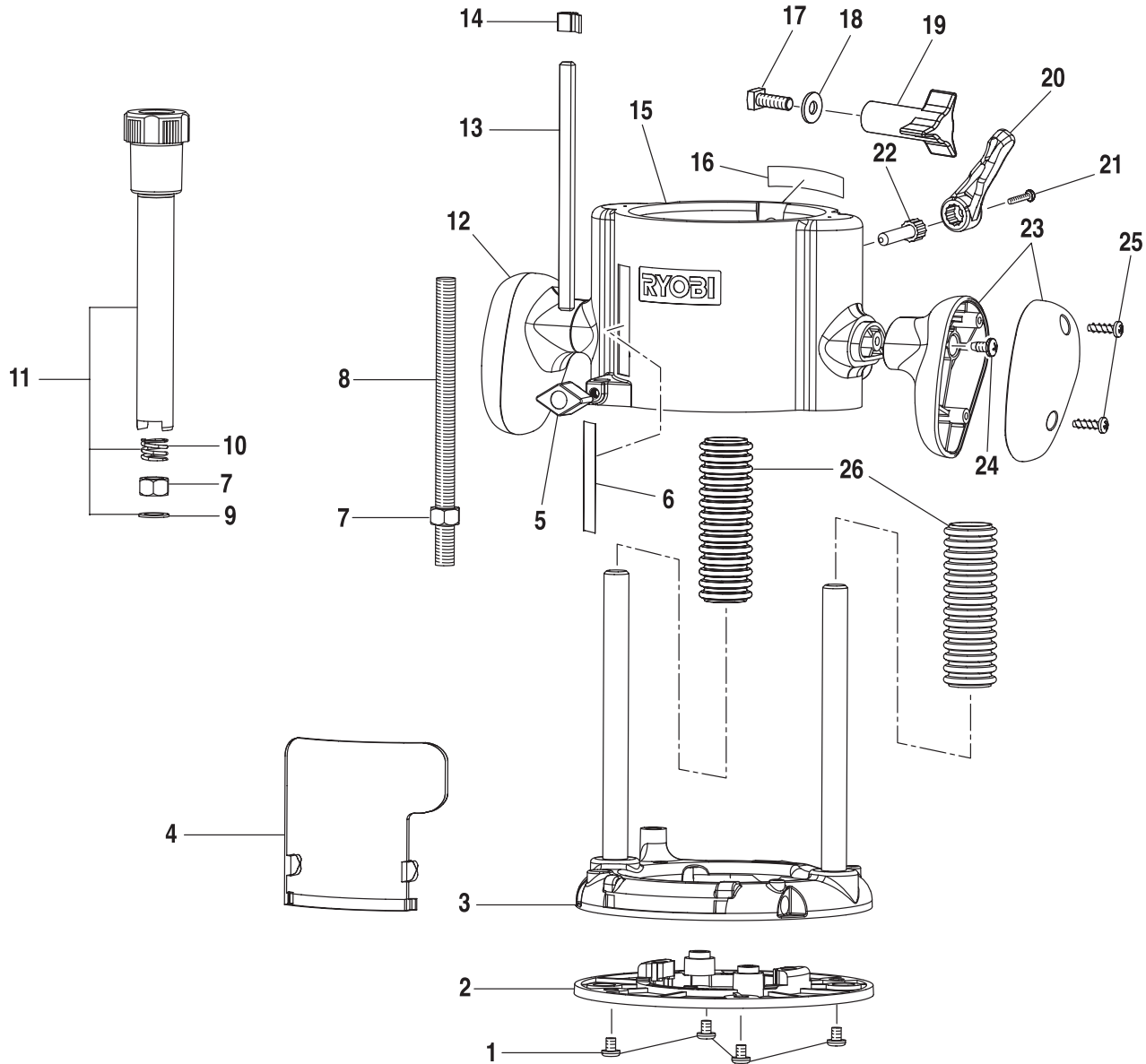
The model number will be found on a plate attached to the base. Always mention the model number in all correspondence regarding your **ROUTER** or when ordering repair parts.

PARTS LIST

KEY NO.	PART NUMBER	DESCRIPTION	QTY.
1	200246001	BASE W/PIN	1
2	200247001	SUBBASE W/INSERTS	1
3	660136001	* SCREW (10-32 X 1/4 in. PAN HD.)	4
4	512022001	CHIP SHIELD	1
5	200235001	HANDLE ASSEMBLY	1
6	660062005	* SCREW (10-24 X 9/16 in. TORX PAN HD.)	2
7	660161001	* SCREW (8-10 X 5/8 in. PAN HD.)	4
8	511990001	SPLINE	1
9	512055001	ZERO RESET RING	1
10	511991001	RESET RING SPRING	1
11	512021001	DEPTH ADJUSTMENT RING	1
12	940347002	DATA / INFORMATION PLATE	1
13	200248001	LEVER W/INFORMATION PLATE	1
14	671243001	* HEX LOCK NUT (1/4-20)	1
15	671260001	LEVER PIN	1
16	631123001	WASHER	1
17	671247001	NEEDLE ROLLER PIN	1
18	200244001	RIGHT HANDLE SET	1
19	512023001	DUST NOZZLE (Optional for RE1803BK)	1
20	660284004	* SCREW (6-32 x 3/8 in. PAN HD.) (Optional for RE1803BK)	2
21	000727007	LOCK LEVER REPAIR KIT	1

*** Standard Hardware Item – May Be Purchased Locally**

RYOBI ROUTER PLUNGE FRAME – MODEL NUMBER R181PB1



WARNING: Improper repair of a double insulated tool can result in damages to the double insulation system possibly causing electrical shock or electrocution. Any repairs requiring disassembly of your tool requires safety testing and should only be performed by a Ryobi Authorized Service Center. For the service center nearest you call 1-800-525-2579.

RYOBI ROUTER PLUNGE FRAME – MODEL NUMBER R181PB1

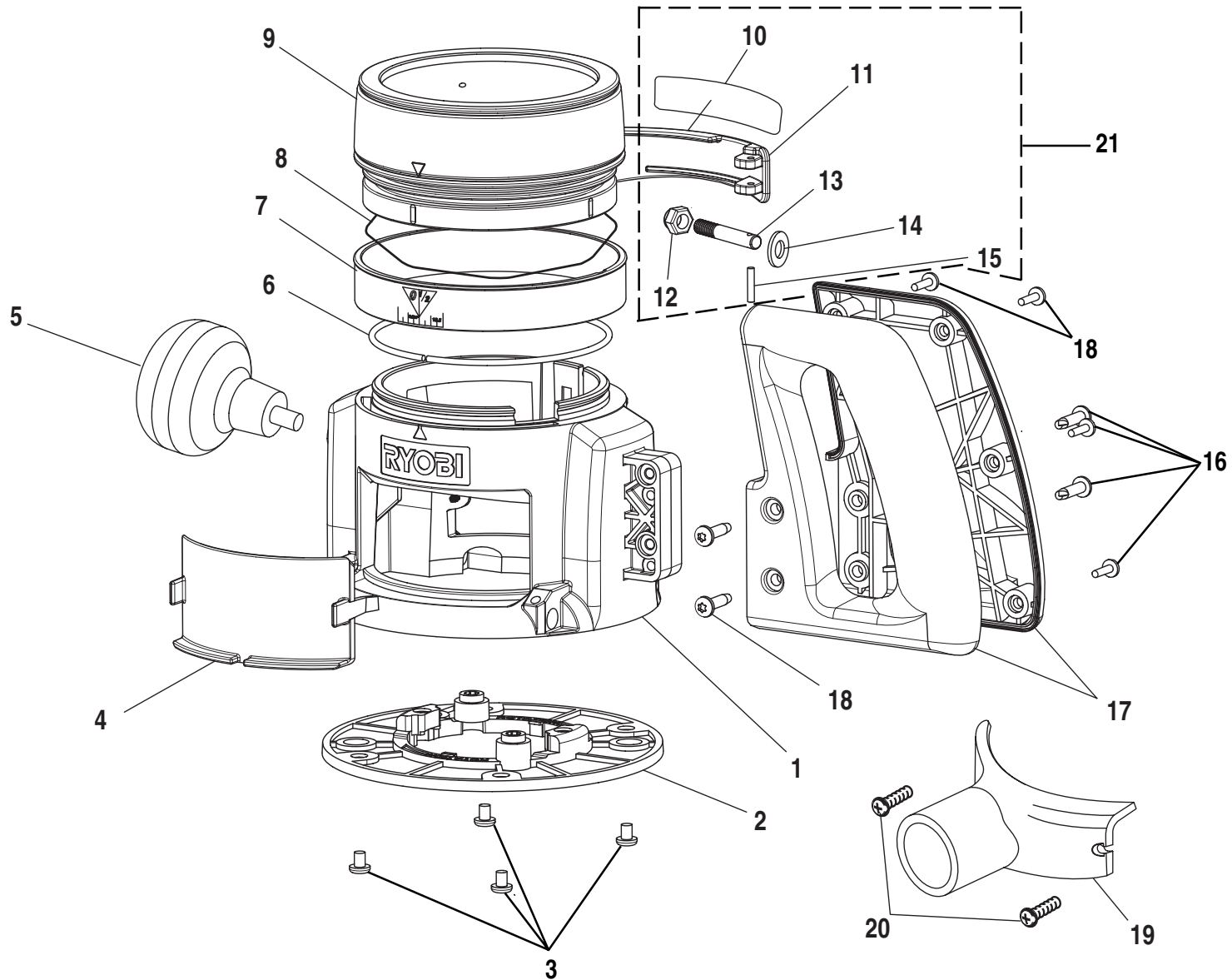
The model number will be found on a plate attached to the base. Always mention the model number in all correspondence regarding your **ROUTER** or when ordering repair parts.

PARTS LIST

KEY NO.	PART NUMBER	DESCRIPTION	QTY.
1	660136001	* SCREW (10-32 X 1/4 in. PAN HD.)	4
2	200247001	SUBBASE W/INSERTS	1
3	200265001	BASE W/RODS	1
4	550848001	CHIP SHIELD	1
5	550854001	STOP BAR KNOB	1
6	940299510	SCALE LABEL	1
7	660163002	* HEX NUT (3/8-16)	2
8	671275001	DEPTH ADJUSTMENT ROD	1
9	671269001	WASHER	1
10	671271001	COMPRESSION SPRING	1
11	200264001	DEPTH ADJUSTMENT KNOB (INCLUDES KEY NOS. 9 AND 10)	1
12	200235001	HANDLE ASSEMBLY	1
13	620168001	DEPTH STOP BAR	1
14	380855001	POINTER	1
15	200242003	PLUNGE FRAME W/BEARINGS	1
16	940347004	DATA / INFORMATION PLATE	1
17	660104009	* BOLT (1/4-20 X 3/8 in. SQ. HD.)	1
18	680771001	FLAT WASHER	1
19	512054001	LOCKING KNOB	1
20	550849001	PLUNGE LOCK LEVER	1
21	660284003	* SCREW (6-32 X 1/4 in. PAN HD.)	1
22	660009001	PLUNGE LOCK SCREW	1
23	200244001	RIGHT HANDLE SET	1
24	660062005	* SCREW (10-24 X 9/16 in. TORX PAN HD.)	2
25	660161001	* SCREW (8-10 X 5/8 in. PAN HD.)	4
26	300524002	PLUNGE SPRING ASSEMBLY	2

* Standard Hardware Item – May Be Purchased Locally

RYOBI ROUTER D HANDLE – MODEL NUMBER R181DB1



WARNING: Improper repair of a double insulated tool can result in damages to the double insulation system possibly causing electrical shock or electrocution. Any repairs requiring disassembly of your tool requires safety testing and should only be performed by a Ryobi Authorized Service Center. For the service center nearest you call 1-800-525-2579.

RYOBI ROUTER D HANDLE – MODEL NUMBER R181DB1

The model number will be found on a plate attached to the base. Always mention the model number in all correspondence regarding your **ROUTER** or when ordering repair parts.

PARTS LIST

KEY NO.	PART NUMBER	DESCRIPTION	QTY.
1	200243003	D-HANDLE BASE	1
2	200247001	SUBBASE W/ INSERTS	1
3	660136001	* SCREW (10-32 X 1/4 in. PAN HD.)	4
4	512022001	CHIP SHIELD	1
5	512029001	KNOB	1
6	511990001	SPLINE	1
7	512055001	ZERO RESET RING	1
8	511991001	RESET RING SPRING	1
9	512021001	DEPTH ADJUSTMENT RING	1
10	940347003	DATA / INFORMATION PLATE	1
11	200248005	LEVER W/INFORMATION PLATE (INCLUDES KEY NO. 10)	1
12	671243001	HEX LOCK NUT (1/4-20)	1
13	671260001	LEVER PIN	1
14	631123001	WASHER	1
15	671247001	PIN NEEDLE ROLLER	1
16	660155001	* SCREW (8-10 X 1/2 in. PAN HD.)	4
17	200243002	D-HANDLE	1
18	660062006	* SCREW (10-24 X 3/4 in. TORX PAN HD.)	4
19	512023001	DUST NOZZLE	1
20	660284004	* SCREW (6-32 X 3/8 in. PAN HD.)	2
21	000727006	LOCK LEVER REPAIR KIT	1

*** Standard Hardware Item – May Be Purchased Locally**