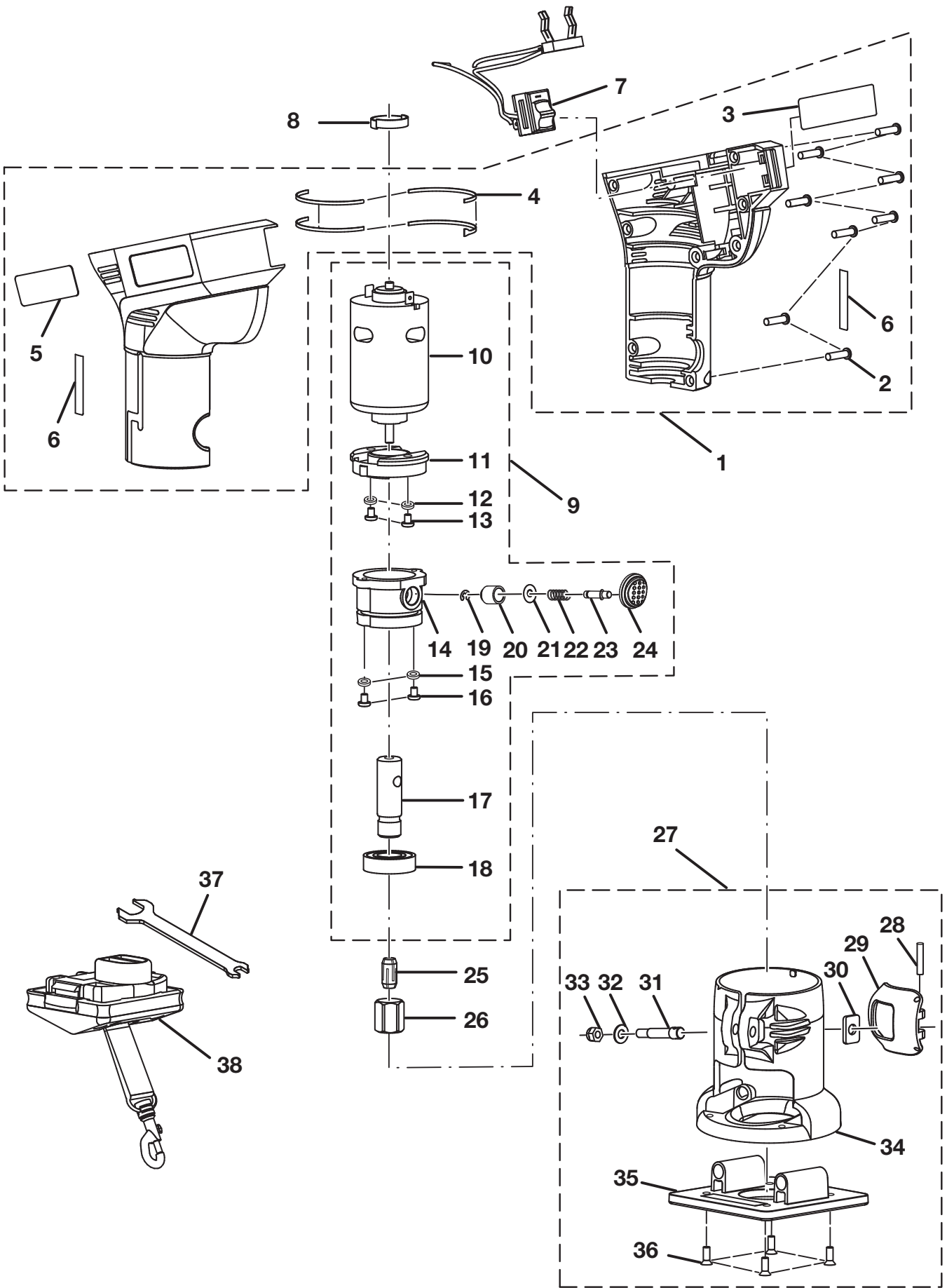


**RYOBI  
18 VOLT TRIMMER  
MODEL NO. P600  
REPAIR SHEET**

RYOBI 18 VOLT TRIMMER – MODEL NUMBER P600



## RYOBI 18 VOLT TRIMMER – MODEL NUMBER P600

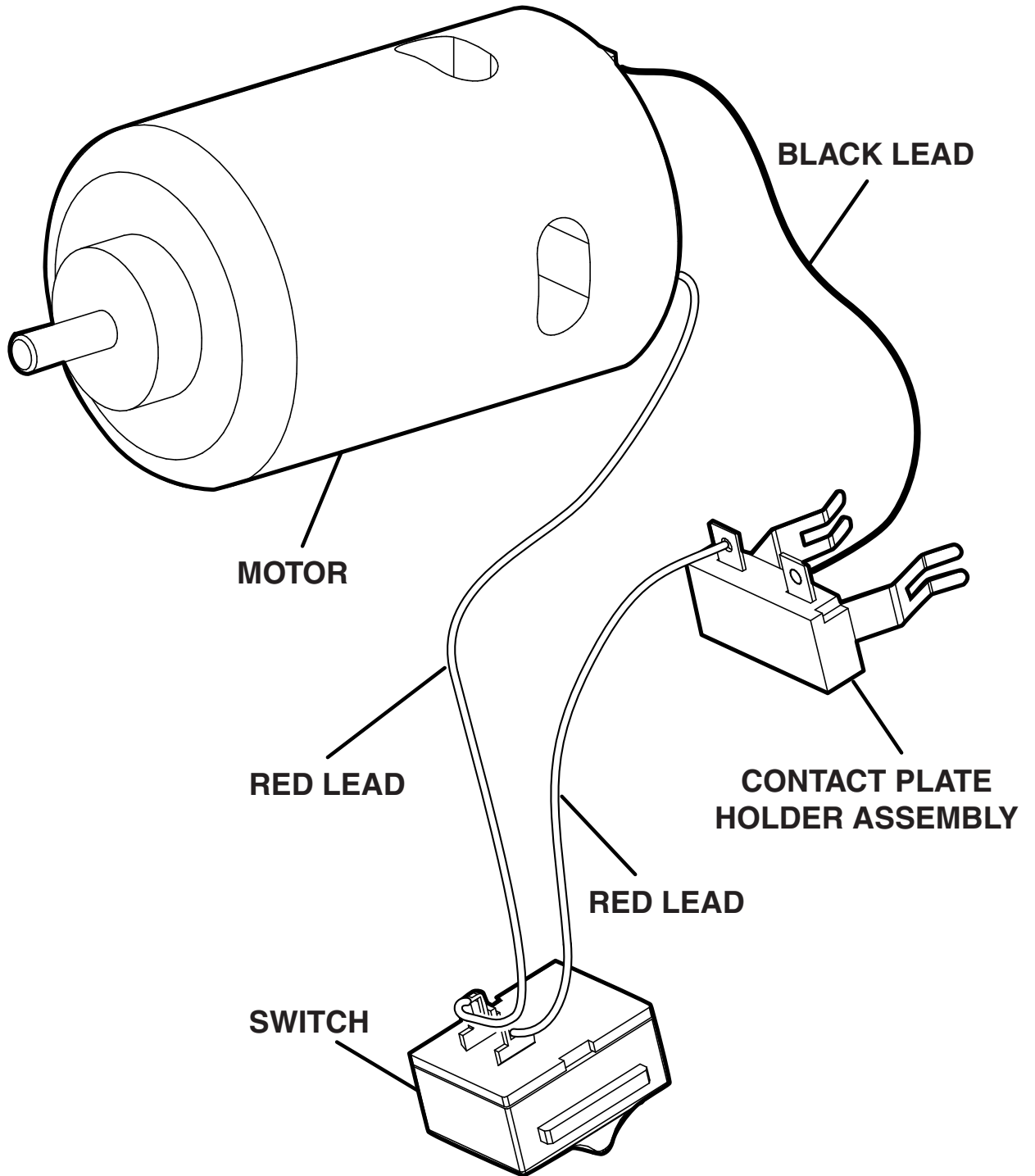
The model number will be found on a plate attached to the motor housing. Always mention the model number in all correspondence regarding your **TRIMMER** or when ordering repair parts.

### PARTS LIST

KEY NO.	PART NUMBER	DESCRIPTION	QTY
1	200202321	HOUSING ASSEMBLY W / LABELS (INC. KEY NOS. 2-6).....	1
2	6620805	* SCREW (M4 X 16 mm PAN HD.) .....	8
3	940078058	DATA LABEL.....	1
4	5605513	FOAM RUBBER .....	4
5	940114108	LOGO LABEL.....	1
6	940299506	SCALE LABEL .....	2
7	270017056	SWITCH ASSEMBLY .....	1
8	5991501	MOTOR BACK RING.....	1
9	200315001	MOTOR & OUTPUT SHAFT & LOCK PIN ASSEMBLY (INC. KEY NOS.10-24) .....	1
10	7439401	MOTOR .....	1
11	640882001	MOTOR BASE.....	1
12	6796001	SPRING WASHER .....	2
13	6621902	* SCREW (M5 X 12 mm PAN HD.) .....	2
14	640881001	BEARING HOLDER TOP COVER.....	1
15	6702801	SPRING WASHER .....	2
16	6621101	* SCREW (M3 X 8 mm PAN HD.) .....	2
17	620365001	OUTPUT SHAFT .....	1
18	671608001	BALL BEARING.....	1
19	6725101	RETAINING RING .....	1
20	670230003	BUSHING .....	1
21	680661001	CURVED WASHER .....	1
22	6723101	SPRING.....	1
23	670229002	SHAFT LOCK PIN .....	1
24	512947001	LOCK PIN CAP .....	1
25	6904501	COLLET (1/4 in.) .....	1
26	690043002	COLLET NUT .....	1
27	200234005	BASE ASSEMBLY (INC. KEY NOS. 28-36).....	1
28	690401002	SPRING PIN.....	1
29	640708003	CLAMP LEVER .....	1
30	671352001	SQUARE WASHER.....	1
31	620319001	ADJUST SCREW SHAFT .....	1
32	670060001	WASHER .....	1
33	6797401	NYLON INSERT NUT.....	1
34	342073001	BASE SUPPORT.....	1
35	512047002	SQUARE BASE.....	1
36	660279004	* SCREW (M4 X 12 mm FLAT HD.).....	4
37	690604002	WRENCH.....	1
38	200292003	PLUG IN LANYARD.....	1
	983000600	OPERATOR'S MANUAL (960223392)	
	983000600R	REPAIR SHEET (REV:02)	
	04-08-05		

**WARNING: Improper repair of a double insulated tool can result in damage to the double insulation system possibly causing electrical shock or electrocution. Any repairs requiring disassembly of your tool requires safety testing and should only be performed by a Ryobi Authorized Service Center. For the service center nearest you call 1-800-525-2579.**

\* Standard Hardware Item – May Be Purchased Locally



**WIRING DIAGRAM**