

RYOBI
18 VOLT DC CAULKING GUN
MODEL NO. P310
REPAIR SHEET

RYOBI 18 VOLT DC CAULKING GUN – MODEL NUMBER P310

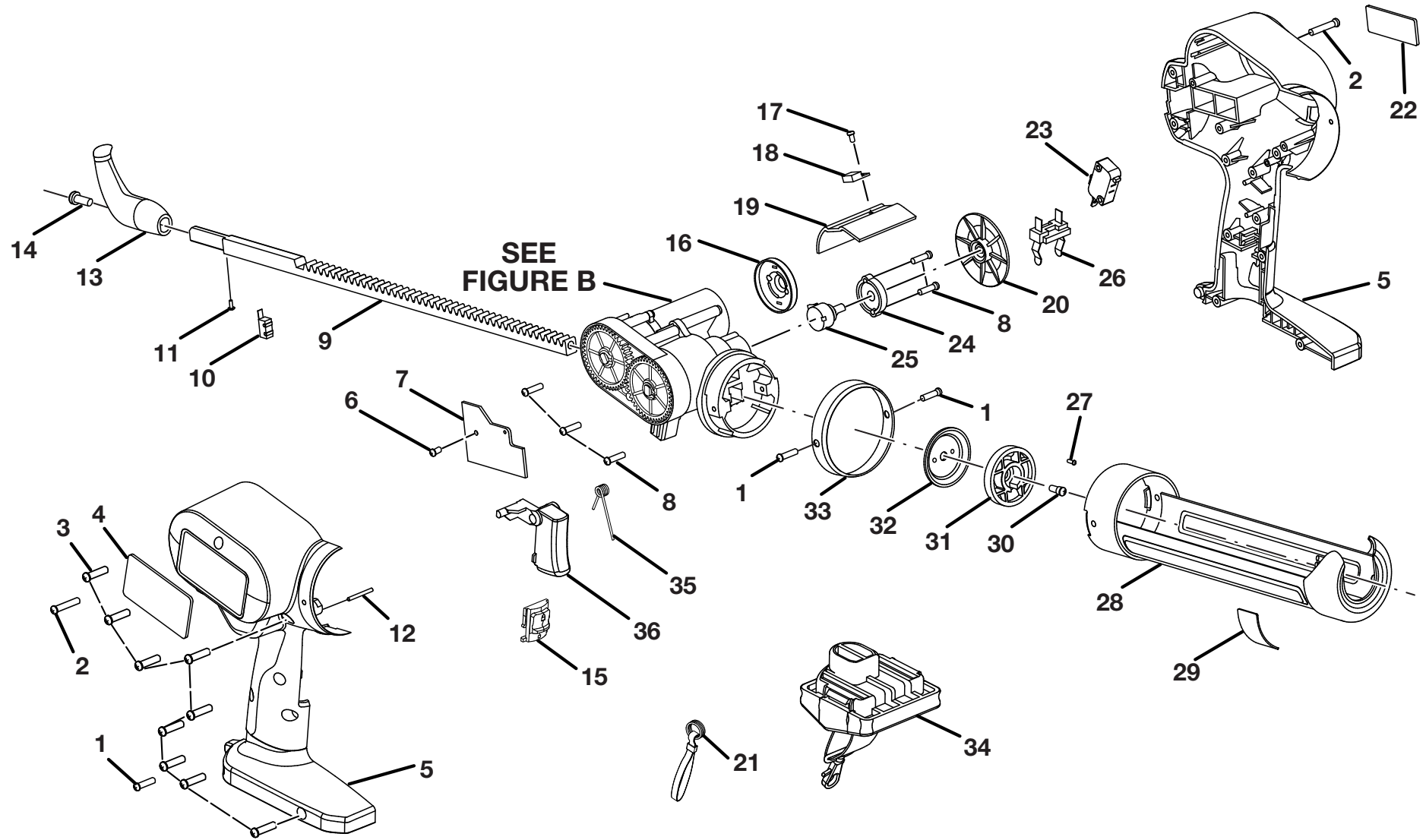


Figure A

RYOBI 18 VOLT DC CAULKING GUN – MODEL NUMBER P310

The model number will be found on a plate attached to the motor housing. Always mention the model number in all correspondence regarding your **CAULKING GUN** or when ordering repair parts.

PARTS LIST

KEY NO.	PART NUMBER	DESCRIPTION	QTY	KEY NO.	PART NUMBER	DESCRIPTION	QTY
1	6620614	* SCREW (M3.5 X 14 mm PAN HD.).....	3	20	342787001	SPEED CONTROL DIAL KNOB.....	1
2	810203001	SPEED POTENTIOMETER.....	2	21	9002711	LANYARD	1
3	6627201	* SCREW (M4 X 14 mm BINDING HD.).....	9	22	940114107	LOGO LABEL	1
4	940078057	DATA LABEL	1	23	760307001	SWITCH	1
5	200202324	HOUSING WITH LABEL ASSEMBLY (INC. KEY NOS. 4, 22 and 37).....	1	24	512905001	FIELD.....	1
6	660203027	* SCREW (M3 X 8 mm PAN HD.).....	1	25	830223001	VOLTAGE REGULATOR.....	1
7	860260001	CIRCUIT BOARD	1	26	300001044	CONTACT PLATE HOLDER.....	1
8	660203009	* SCREW (M3 X 14 mm PAN HD.).....	5	27	6621106	* SCREW (M3 X 6 mm PAN HD.).....	1
9	640796001	RACK	1	28	631279001	TUBE HOLDER	1
10	760384001	MICRO SWITCH.....	1	29	940230100	WARNING LABEL	1
11	660169038	* SCREW (M4 X 6 mm SOC. HD.)	1	30	660409001	* SCREW (M4 X 6 mm).....	1
12	671527001	PIN.....	1	31	512830001	PLUNGER	1
13	512790001	RACK HANDLE	1	32	631286001	PLUNGER	1
14	660219007	* SCREW (M5 X 15 mm PAN HD.).....	1	33	631288001	RING.....	1
15	512789001	TRIGGER LOCK BUTTON	1	34	200292003	PLUG IN LANYARD.....	1
16	561200001	MOTOR COVER	1	35	671521001	TRIGGER SPRING.....	1
17	660211013	* SCREW (M3 X 4 mm PAN HD.).....	1	36	512788001	TRIGGER	1
18	830235001	POWER MOSFET	1				
19	631289001	HEAT SINK	1				

* Standard Hardware Item – May Be Purchased Locally

RYOBI 18 VOLT DC CAULKING GUN – MODEL NUMBER P310

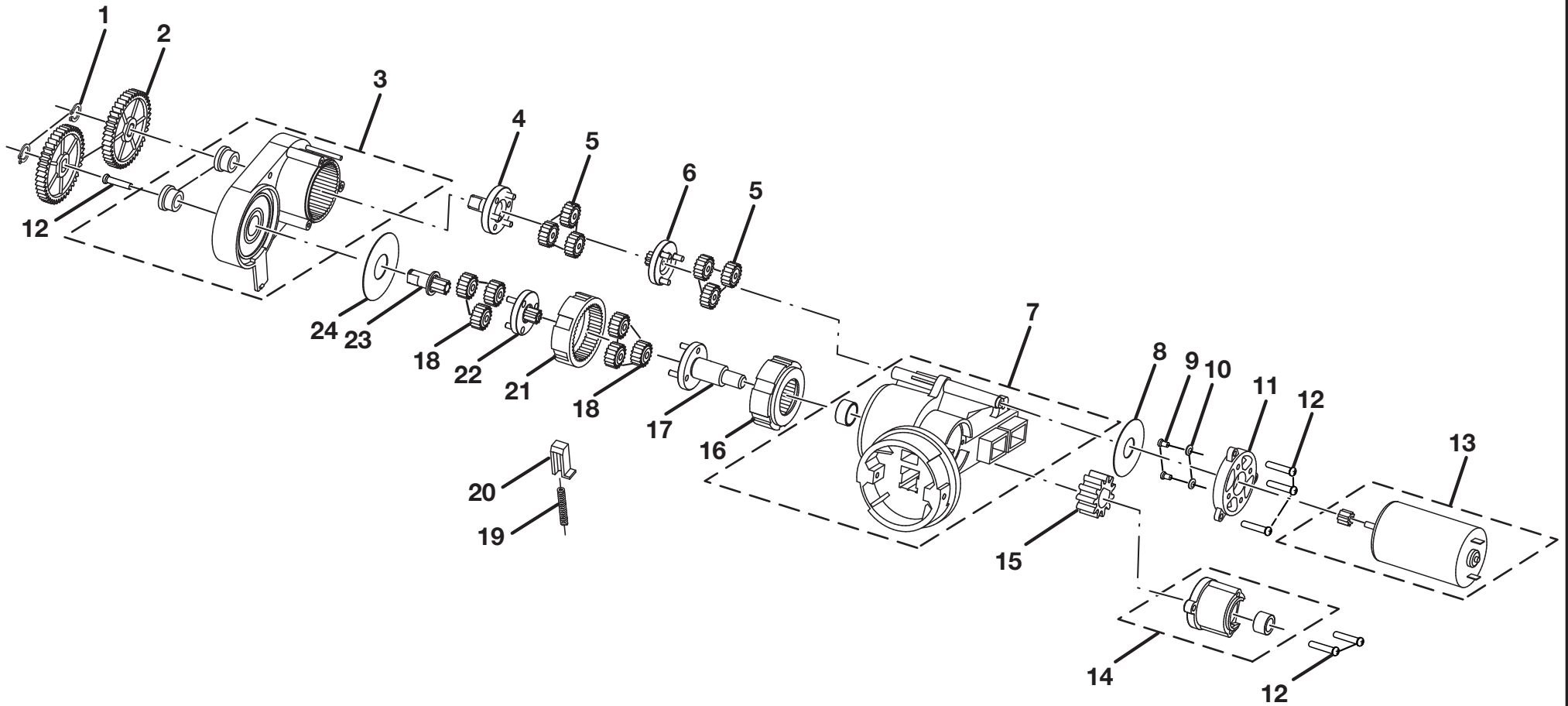


Figure B

RYOBI 18 VOLT DC CAULKING GUN – MODEL NUMBER P310

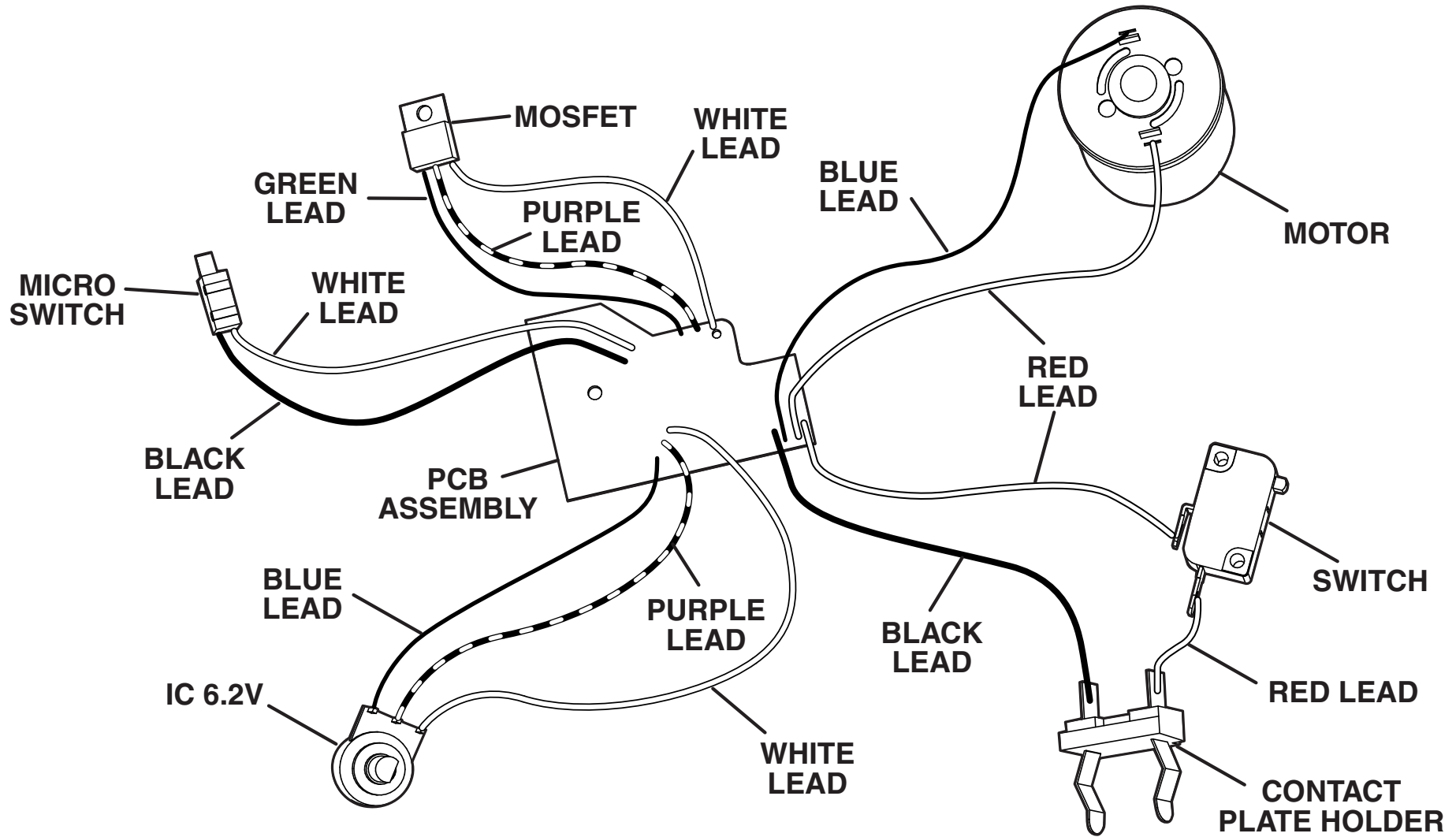
The model number will be found on a plate attached to the motor housing. Always mention the model number in all correspondence regarding your **CAULKING GUN** or when ordering repair parts.

PARTS LIST

Key No.	Part Number	Description	Qty
1	670608001	C-RING	2
2	512795001	SHIFT GEAR.....	2
3	300215004	GEAR CASE ASSEMBLY	1
4	671575001	CARRIER	1
5	512793001	PLANETARY GEAR	6
6	610463001	SOLAR GEAR.....	1
7	300114019	GEAR TRAIN HOUSING ASSEMBLY	1
8	671577001	WASHER.....	1
9	6621106	* SCREW (M3 X 6 mm PAN HD.)	2
10	6702801	SPRING WASHER	2
11	512792001	MOTOR BRACKET	1
12	660010003	* SCREW (M3 X 16 mm PAN HD.)	6
13	230074007	MOTOR ASSEMBLY	1
14	300763002	GEAR HOUSING COVER ASSEMBLY	1
15	610459001	GEAR.....	1
16	512796001	RING GEAR	1
17	620354001	CARRIER SHAFT	1
18	610461001	PLANETARY GEAR	6
19	671590001	SPRING	1
20	671576001	CLUTCH	1
21	610462001	RING GEAR	1
22	610464001	SOLAR GEAR.....	1
23	620355001	GEAR SHAFT	1
24	680574001	WASHER.....	1
	983000592	OPERATOR'S MANUAL (960223391)	
	983000592R	REPAIR SHEET (REV:03)	
	04-14-05		

*** Standard Hardware Item – May Be Purchased Locally**

RYOBI 18 VOLT DC CAULKING GUN – MODEL NUMBER P310



WIRING DIAGRAM