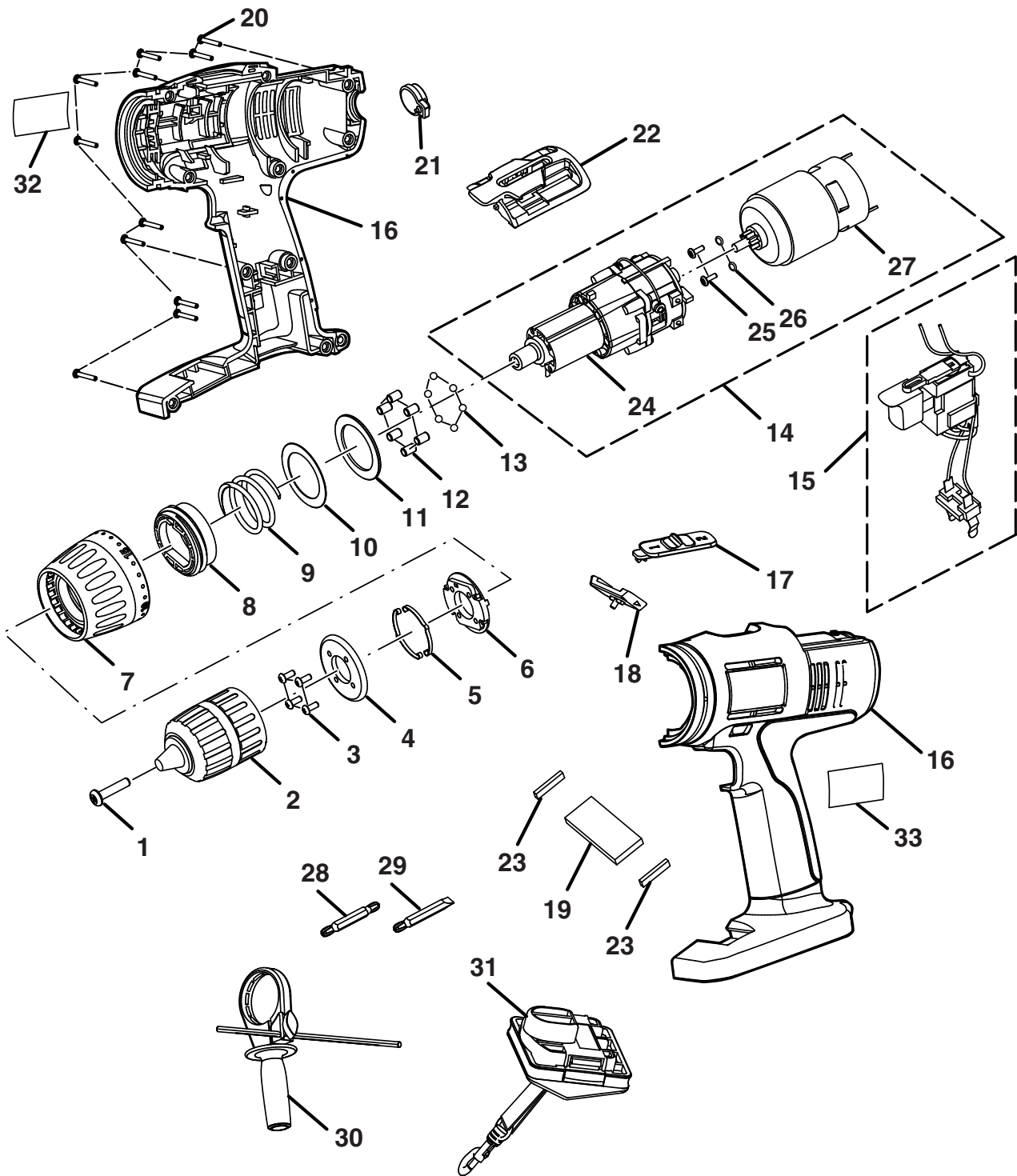


**RYOBI 1/2 in. (13 mm)
18 VOLT TWO SPEED HAMMER DRILL
MODEL NO. P210
REPAIR SHEET**

RYOBI 1/2 in. (13 mm) HAMMER DRILL – MODEL NUMBER P210



NOTE: To avoid the possibility of alteration or damage to this product, service should be performed by your nearest Ryobi Authorized Service Center. For the service center nearest you call 1-800-525-2579.

RYOBI 1/2 in. (13 mm) HAMMER DRILL – MODEL NUMBER P210

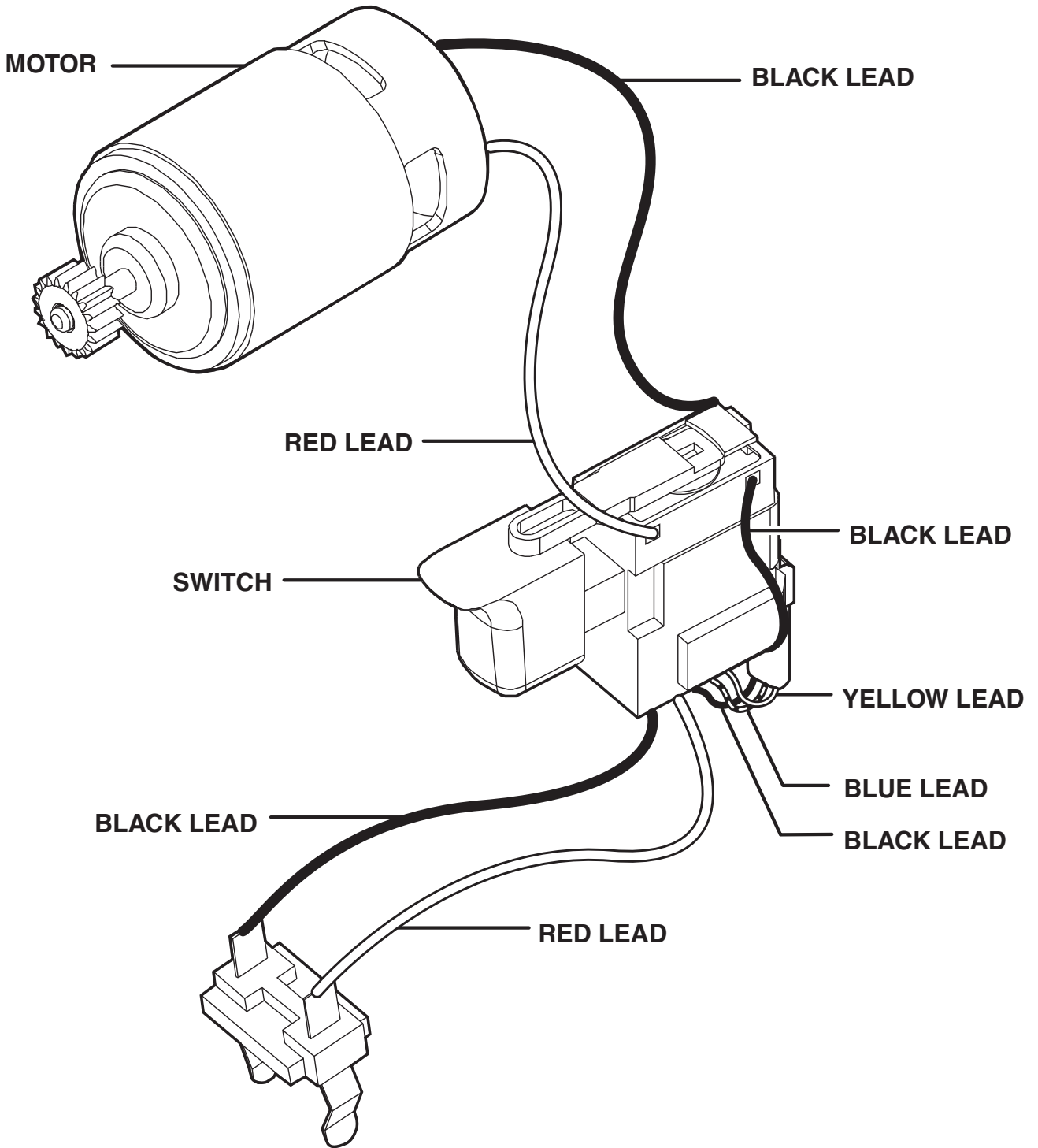
The model number will be found on a plate attached to the motor housing. Always mention the model number in all correspondence regarding your **Hammer Drill** or when ordering repair parts.

PARTS LIST

Key No.	Part Number	Description	Qty.
1	6613402	* SCREW (M6 X 1.0 X 27 mm LEFT HAND).....	1
2	6903329	CHUCK (1/2 in.)	1
3	6620311	* SCREW (M3 X 20 mm PAN HD.)	4
4	6359801	MOUNTING PLATE	1
5	6392201	SPRING PLATE.....	2
6	5434610	SPRING HOLDER.....	1
7	5913801	CLUTCH CAP	1
8	5437202	SLEEVE	1
9	6843401	TORQUE SPRING	1
10	6854701	WASHER.....	1
11	6710501	CLUTCH WASHER	1
12	6833802	PIN	6
13	6721901	BALL.....	6
14	200293011	MOTOR & GEAR TRAIN ASSEMBLY (INC. 24-27).....	1
15	270023026	SWITCH ASSEMBLY	1
16	200202342	HOUSING ASSEMBLY WITH LABEL	1
17	4089401	2-SPEED CHANGE KNOB	1
18	5987601	FORWARD / REVERSE SELECTOR.....	1
19	6000303	MAGNET	1
20	6620614	* SCREW (M3.5 X 14 mm PAN HD.)	11
21	3048001	REAR LEVEL ASSEMBLY	1
22	300034002	BIT STORAGE ASSEMBLY.....	1
23	560444002	FOAM RUBBER	2
24	220016045	GEAR BOX ASSEMBLY	1
25	6621202	* SCREW (M4 X 10 mm PAN HD.).....	2
26	6703001	SPRING WASHER	2
27	2303304	MOTOR ASSEMBLY	1
28	6782044	DOUBLE ENDED BIT (PH 3 and S7).....	1
29	6782045	DOUBLE ENDED BIT (PH 2 and S6).....	1
30	300188012	AUXILIARY HANDLE W/DEPTH GUAGE ASSEMBLY	1
31	200292003	PLUG IN LANYARD	1
32	940237052	DATA LABEL.....	1
33	940203044	LOGO LABEL.....	1
	983000540	OPERATOR'S MANUAL (960223353)	
	983000540R	REPAIR SHEET (REV:01)	
	12-14-04		

* Standard Hardware Item – May Be Purchased Locally

RYOBI 1/2 in. (13 mm) HAMMER DRILL – MODEL NUMBER P210



WIRING DIAGRAM