

**RYOBI
JIG SAW
MODEL NO. JS550L
REPAIR SHEET**

RYOBI JIG SAW – MODEL NUMBER JS550L

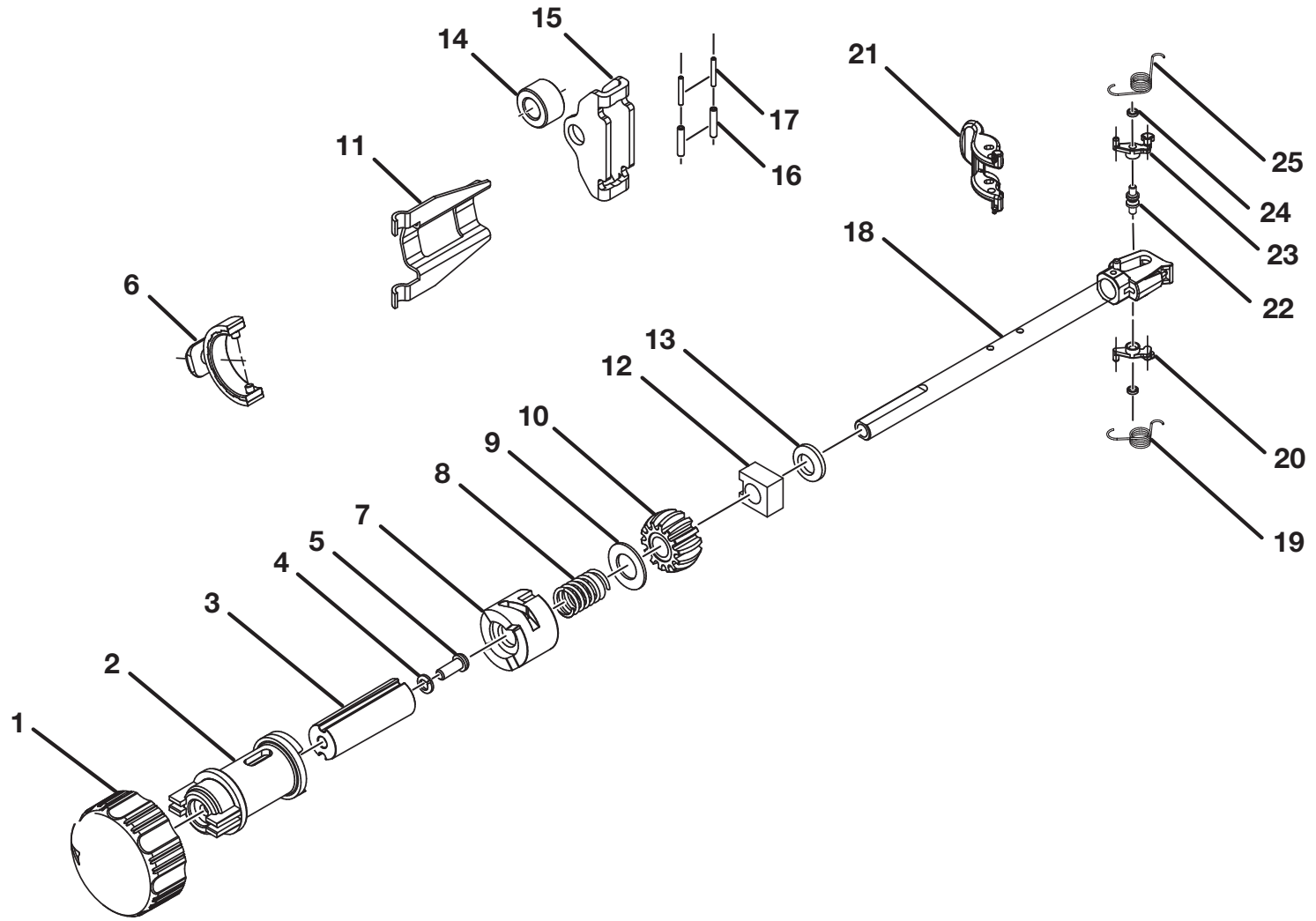


Figure A

RYOBI JIG SAW – MODEL NUMBER JS550L

The model number will be found on a plate attached to the motor housing. Always mention the model number in all correspondence regarding your **JIG SAW** or when ordering repair parts.

PARTS LIST

KEY NO.	PART NUMBER	DESCRIPTION	QTY	KEY NO.	PART NUMBER	DESCRIPTION	QTY
1	301322001	SCROLLING COVER	1	14	671153001	CROSS SLIDE BUSHING	1
2	640770001	SCROLLING	1	15	631085001	SAW BAR SLIDE BRACKET	1
3	671142002	SAW BAR GUIDE BUSHING	1	16	690072002	SPRING PIN	2
4	680379002	SPRING WASHER	1	17	690072003	SPRING PIN.....	2
5	660206014	* SCREW (M3.5 X 14 mm PAN HD.)	1	18	300877007	SAW BAR & BLADE CLAMP ASSEMBLY	1
6	301011001	SCROLLING RELEASE KNOB ASSEMBLY	1	19	690387002	COIL SPRING	1
7	511773001	SCROLLING RELEASE BLOCK	1	20	690377003	LINKAGE ARM (RIGHT SCM440).....	1
8	671146001	SPRING	1	21	511826001	BLADE CLAMP LEVER.....	1
9	680436006	WASHER	1	22	671318001	ROLLER	1
10	300306015	HEAT SINK ASSEMBLY	1	23	690377004	LINKAGE ARM (LEFT SCM440)	1
11	630845001	SLIDE GUIDE PLATE	1	24	671319001	E-RING	2
12	671038001	BEARING SLEEVE	1	25	690387001	COIL SPRING	1
13	550427001	WASHER	1				

WARNING: Improper repair of a double insulated tool can result in damage to the double insulation system possibly causing electrical shock or electrocution. Any repairs requiring disassembly of your tool requires safety testing and should only be performed by a Ryobi Authorized Service Center. For the service center nearest you call 1-800-525-2579.

* STANDARD HARDWARE ITEM – MAY BE PURCHASED LOCALLY

RYOBI JIG SAW – MODEL NUMBER JS550L

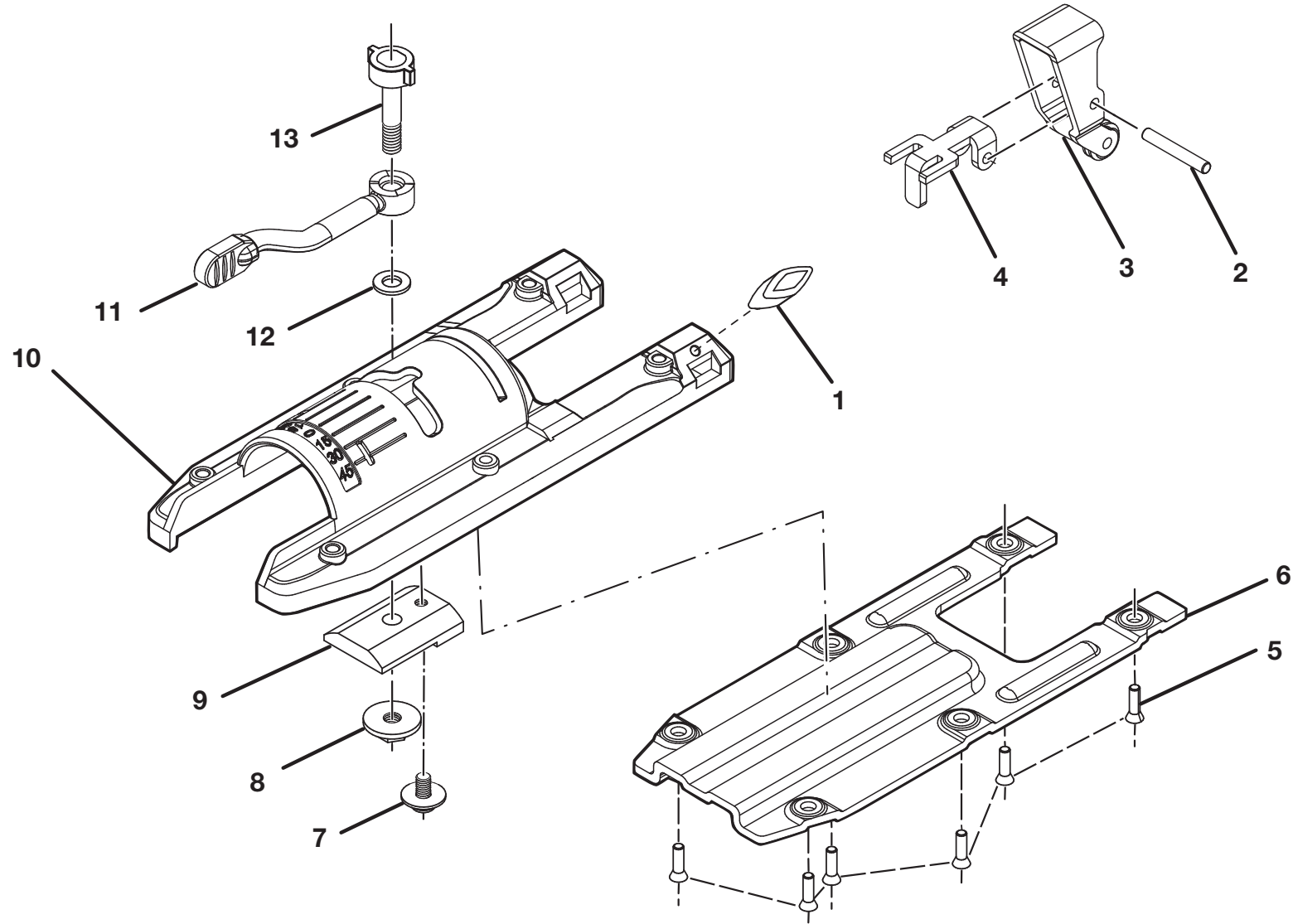


Figure B

RYOBI JIG SAW – MODEL NUMBER JS550L

The model number will be found on a plate attached to the motor housing. Always mention the model number in all correspondence regarding your **JIG SAW** or when ordering repair parts.

PARTS LIST

KEY NO.	PART NUMBER	DESCRIPTION	QTY
1	301124001	KNOB BOLT ASSEMBLY	1
2	671143001	PIN STEEL	1
3	300577015	BLADE GUIDE ASSEMBLY	1
4	631082001	LINK ROD	1
5	660213008	* SCREW (M4 X 10 mm FLAT HD.)	6
6	631109001	BASE COVER	1
7	660176006	* SCREW (M4 X 8 mm)	1
8	631083001	FIX NUT (M5)	1
9	671150001	ADJUSTABLE PAD	1
10	640783001	DIE CASTING BASE	1
11	301010001	BASE TOOL-LESS LEVER ASSEMBLY	1
12	678050001	FLAT WASHER.....	1
13	301008001	FIX WEDGE ASSEMBLY	1

WARNING: Improper repair of a double insulated tool can result in damage to the double insulation system possibly causing electrical shock or electrocution. Any repairs requiring disassembly of your tool requires safety testing and should only be performed by a Ryobi Authorized Service Center. For the service center nearest you call 1-800-525-2579.

* STANDARD HARDWARE ITEM – MAY BE PURCHASED LOCALLY

RYOBI JIG SAW – MODEL NUMBER JS550L

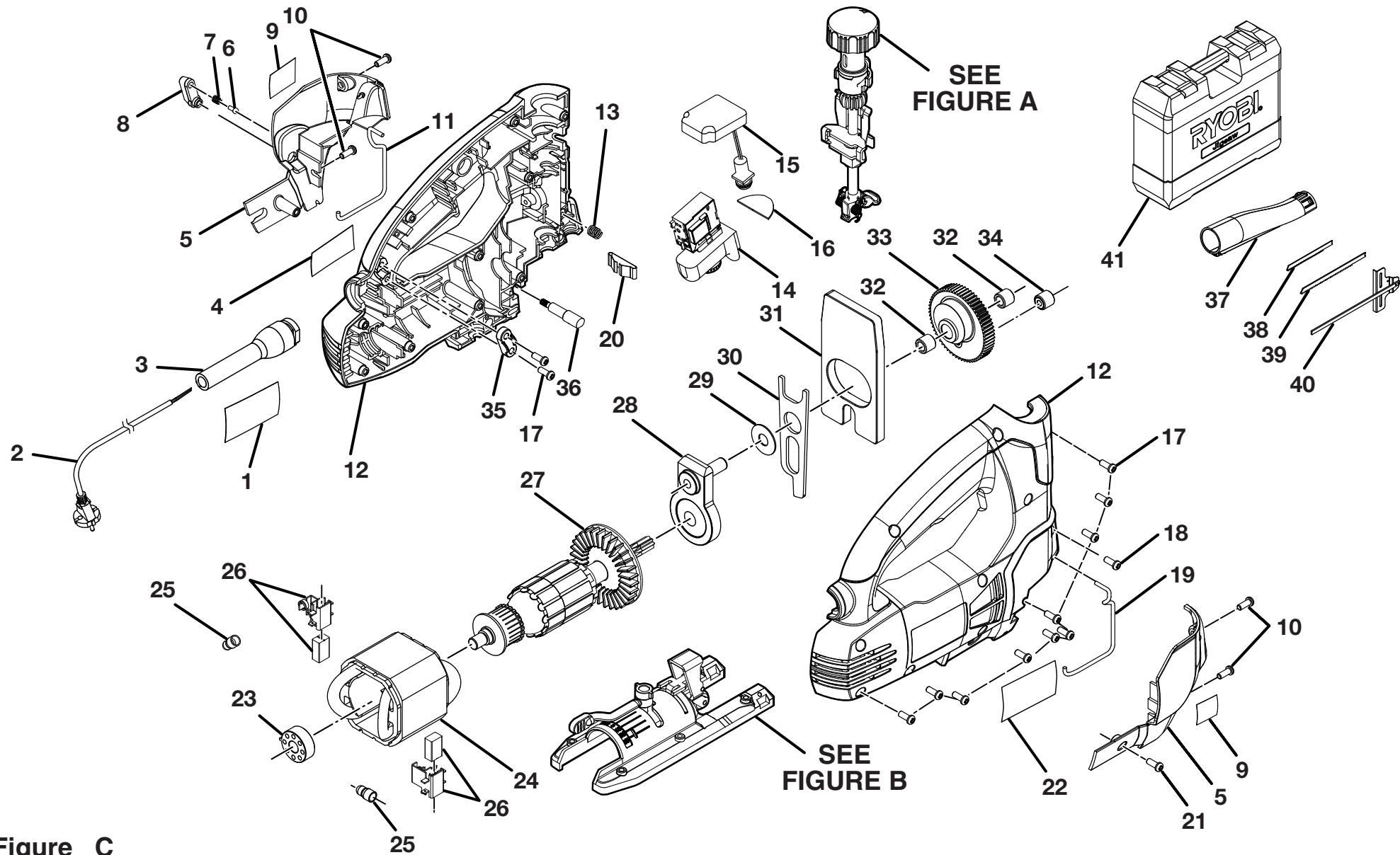


Figure C

RYOBI JIG SAW – MODEL NUMBER JS550L

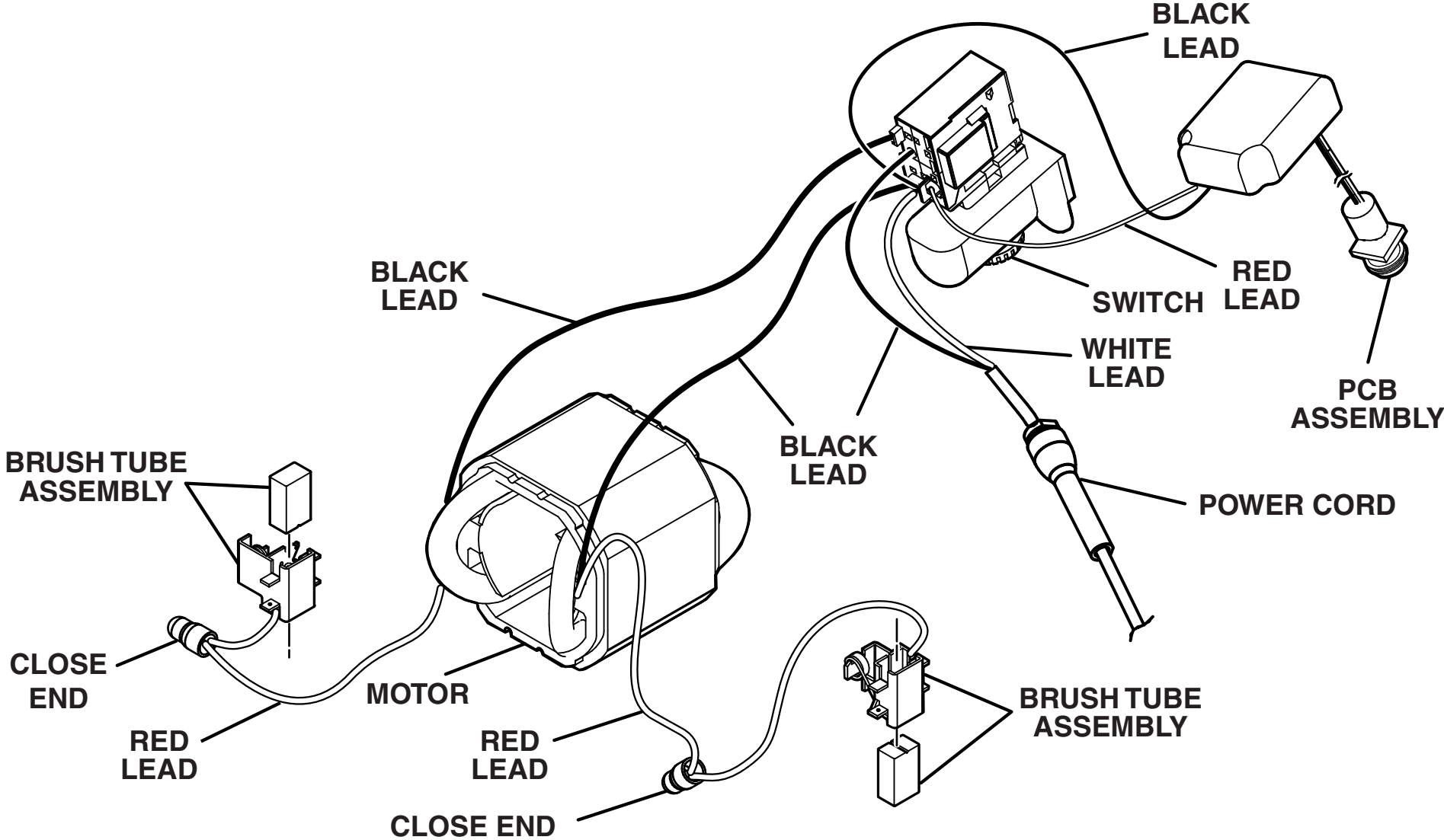
The model number will be found on a plate attached to the motor housing. Always mention the model number in all correspondence regarding your **JIG SAW** or when ordering repair parts.

PARTS LIST

KEY NO.	PART NUMBER	DESCRIPTION	QTY	KEY NO.	PART NUMBER	DESCRIPTION	QTY
1	940299683	CORD LABEL	1	23	680898001	SLEEVE BEARING	1
2	730377003	POWER CORD	1	24	740588001	FIELD	1
3	590274004	BEND RELIEF	1	25	790009001	CLOSE END CONNECTOR	2
4	940304062	LOGO LABEL	1	26	290069044	BRUSH ASSEMBLY	2
5	301320001	FRONT COVER ASSEMBLY	1	27	740589001	ARMATURE	1
6	550424001	DETENT BUTTON	1	28	300926005	BEARING PLATE ASSEMBLY	1
7	680909001	SPRING	1	29	630844001	WASHER	1
8	511774001	ORBITAL KNOB	1	30	631081001	DRIVE PLATE	1
9	940299682	DANGER LABEL FOR LASER	2	31	671008001	BALANCE BLOCK	1
10	660182006	* SCREW (M6 X 12 mm PAN HD.)	4	32	680911001	NEEDLE BEARING	2
11	671147003	GUIDE WIRE (LEFT)	1	33	610388001	OUTPUT GEAR	1
12	200202329	HOUSING ASSEMBLY	1	34	300019002	BUSHING ASSEMBLY W/BEARING	1
13	671209002	SPRING FOR LASER	1	35	590501001	CORD CLAMP	1
14	760342001	SWITCH	1	36	671154001	ORBITAL ADJUSTABLE ROD	1
15	280013051	PCB ASSEMBLY	1	37	301009001	VACUUM ASSEMBLY	1
16	511824001	LENS	1	38	671208001	METAL CUTTING BLADE (18-24 TPI)	1
17	6620805	* SCREW (M4 X 16 mm PAN HD.)	12	39	671207001	WOOD CUTTING BLADE (6-8 TPI)	1
18	512963001	* SCREW (M3 X 6 mm PAN HD.)	1	40	631097001	EDGE GUIDE	1
19	671147002	GUIDE WIRE (RIGHT)	1	41	300912051	CARRYING CASE	1
20	631252001	SPRING PLATE	1		983000574	OPERATOR'S MANUAL (960223251)	
21	660165003	* SCREW (M4 X 18 mm PAN HD.)	1		983000574R	REPAIR SHEET (REV:01)	
22	940301020	DATA LABEL	1		01-24-05		

WARNING: Improper repair of a double insulated tool can result in damage to the double insulation system possibly causing electrical shock or electrocution. Any repairs requiring disassembly of your tool requires safety testing and should only be performed by a Ryobi Authorized Service Center. For the service center nearest you call 1-800-525-2579.

* STANDARD HARDWARE ITEM – MAY BE PURCHASED LOCALLY



WIRING DIAGRAM