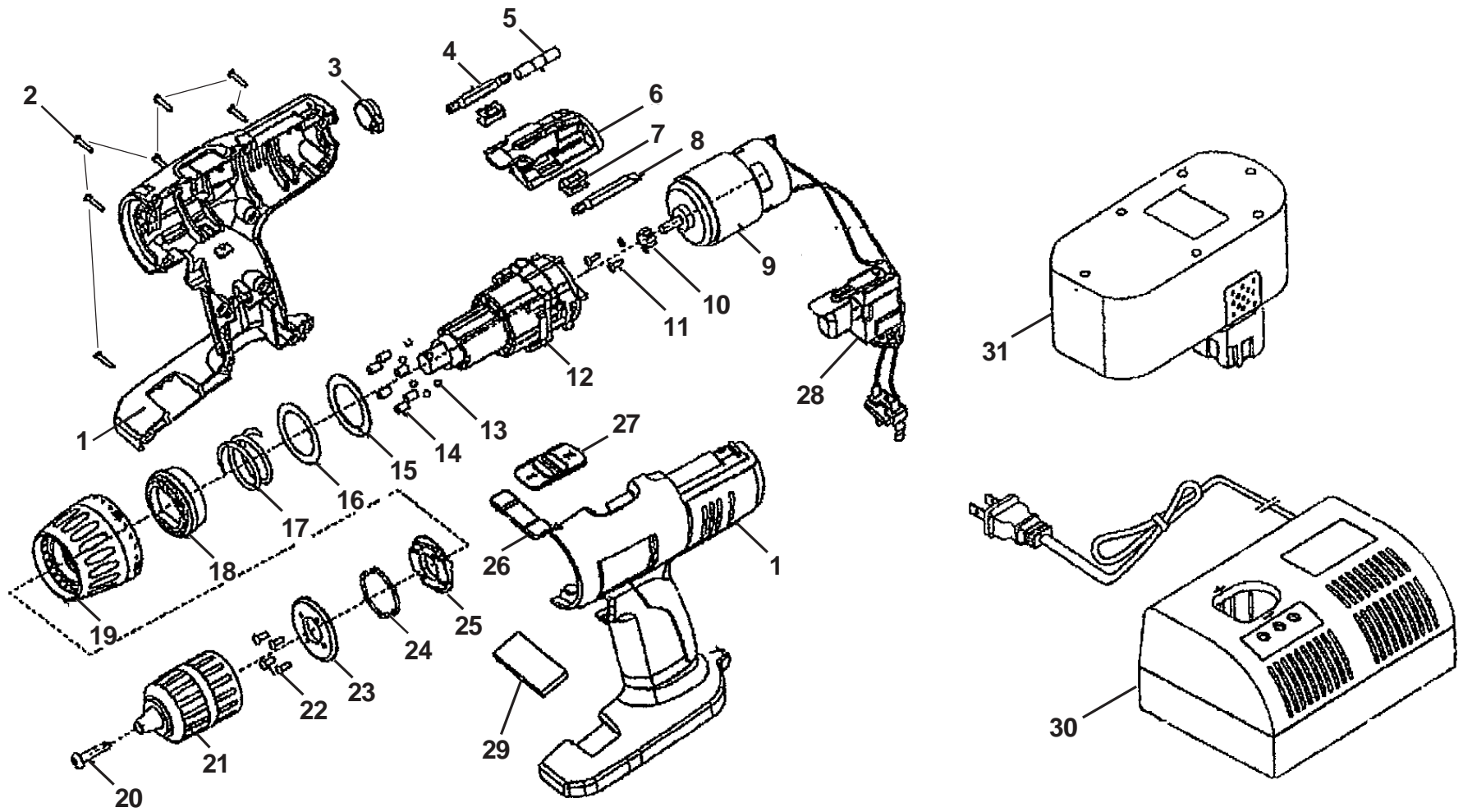


RYOBI 3/8 in.
14.4 VOLT CORDLESS DRILL DRIVER
MODEL NO. HP1442M
REPAIR SHEET

RYOBI 3/8 in., 14.4 VOLT CORDLESS DRILL DRIVER – MODEL NUMBER HP1442M



RYOBI 3/8 in., 14.4 VOLT CORDLESS DRILL DRIVER – MODEL NUMBER HP1442M

The model number will be found on a plate attached to the motor housing. Always mention the model number in all correspondence regarding your **DRILL DRIVER** or when ordering repair parts.

PARTS LIST

Key No.	Part Number	Description	Qty.	Key No.	Part Number	Description	Qty.
1	984408001	HOUSING ASSEMBLY	1	18	5437201	SLEEVE	1
2	6620605	* SCREW (M3.5 X 16 mm)	11	19	5474801	CLUTCH CAP	1
3	3048001	REAR BUBBLE LEVEL	1	20	1130049	CHUCK SCREW (L.H.T.)	1
4	6782005	DOUBLE ENDED BIT	1	21	6805801	CHUCK	1
5	3000906	LEVEL ASSEMBLY	1	22	6620311	* SCREW (M3 X 20 mm)	4
6	5475401	BIT STORAGE	1	23	6359801	MOUNTING PLATE	1
7	6320601	BIT CLIP	2	24	6399201	DETENT RING	2
8	6782015	DOUBLE ENDED BIT	1	25	5434601	SPRING HOLDER	1
9	984409001	MOTOR ASM.(INCLUDES KEY NOS.10,11,12) ..	1	26	5475201	FORWARD/REVERSE LEVER	1
10	6702801	WASHER	2	27	5475301	2-SPEED LEVER	1
11	6621101	* SCREW (M3 X 8 mm)	2	28	2700980	SWITCH ASSEMBLY	1
12	2200914	GEAR BOX ASSEMBLY	1	29	6000303	MAGNET	1
13	6721901	STEEL BALL	6	30	1412001	BATTERY CHARGER	1
14	6833802	PIN	6	31	1314702	BATTERY PACK	1
15	6703503	CLUTCH WASHER	1	32	510308003	CARRYING CASE LATCH (NOT SHOWN)	1
16	6838001	CLUTCH WASHER	1	33	9418528	LOGO PLATE (NOT SHOWN)	1
17	6843401	SPRING	1	34	9418653	DATA PLATE (NOT SHOWN)	1
				35	3063692	CARRYING CASE (NOT SHOWN)	1
					972000-874R	OPERATOR'S MANUAL (REV:00)	
					03-07-05		

WARNING: Improper repair of a double insulated tool can result in damage to the double insulation system possibly causing electrical shock or electrocution. Any repairs requiring disassembly of your tool requires safety testing and should only be performed by a Ryobi Authorized Service Center. For the service center nearest you call 1-800-525-2579.

* Standard Hardware Item – May Be Purchased Locally