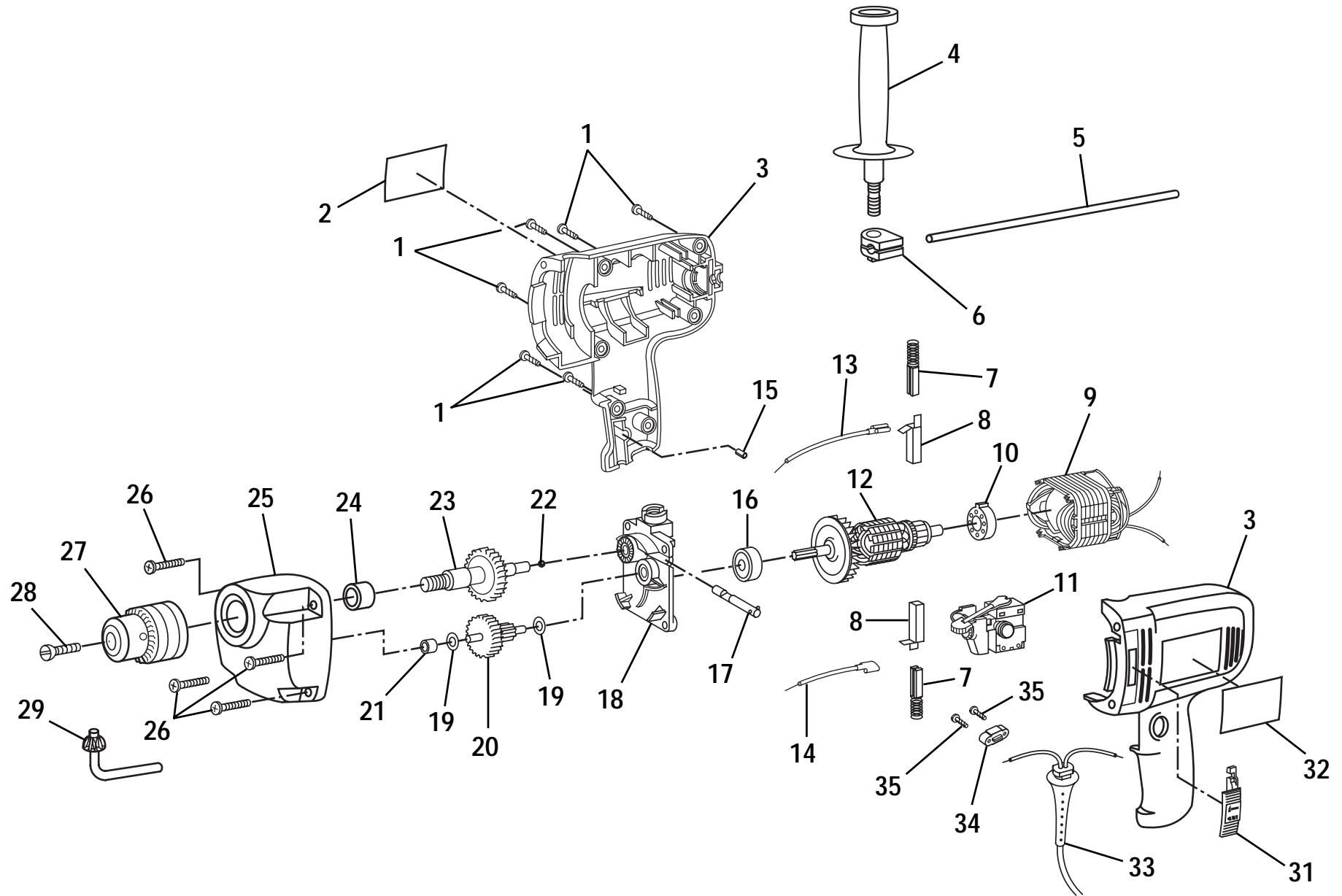


RYOBI 1/2 INCH HAMMER DRILL - MODEL NUMBER HD500



WARNING:

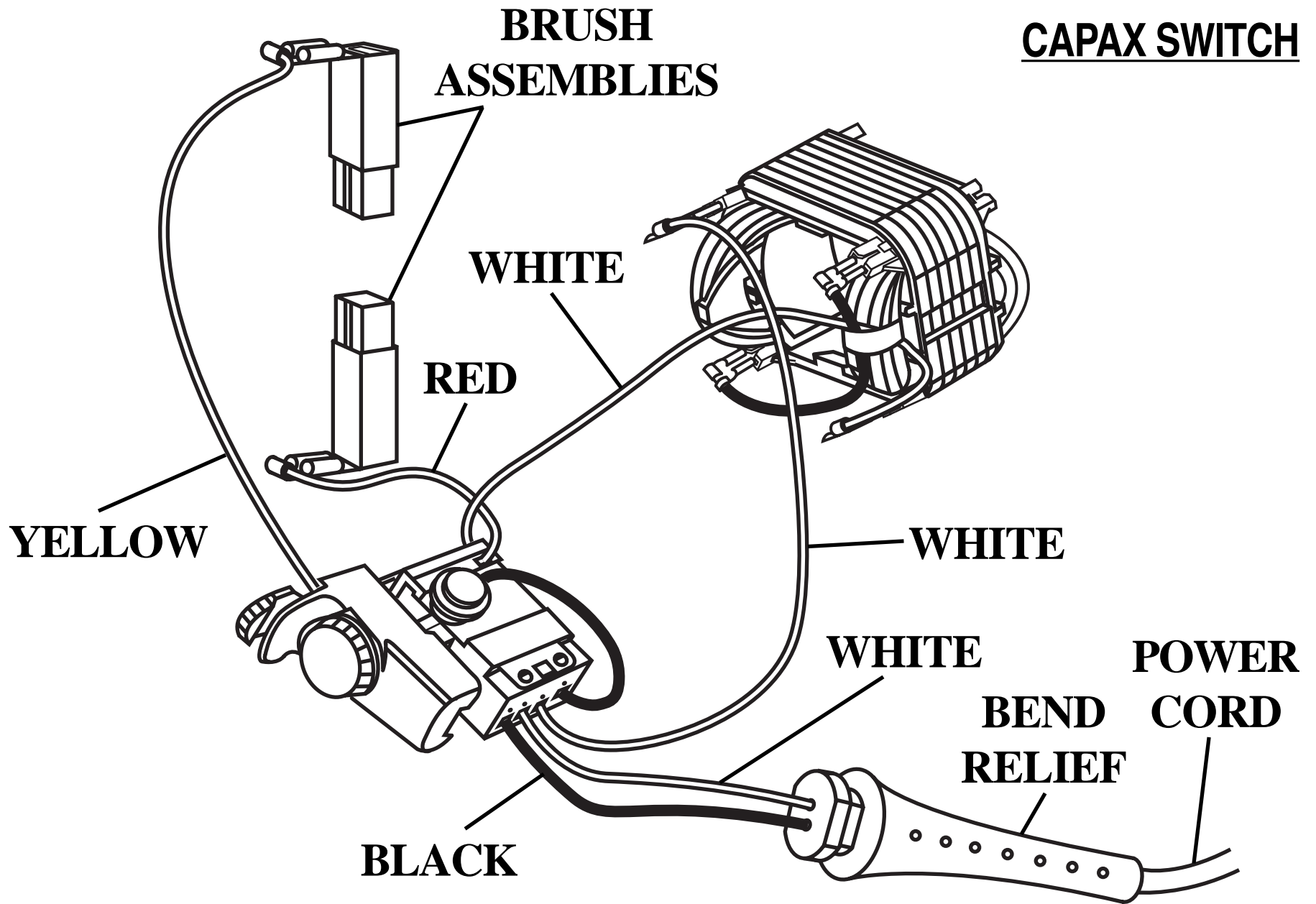
Improper repair of a double insulated tool can result in damages to the double insulation system possibly causing electrical shock or electrocution. Any repairs requiring disassembly of your tool requires safety testing and should only be performed by a Ryobi Factory Service Center or Authorized Service Organization.

RYOBI 1/2 INCH HAMMER DRILL - MODEL NUMBER HD500

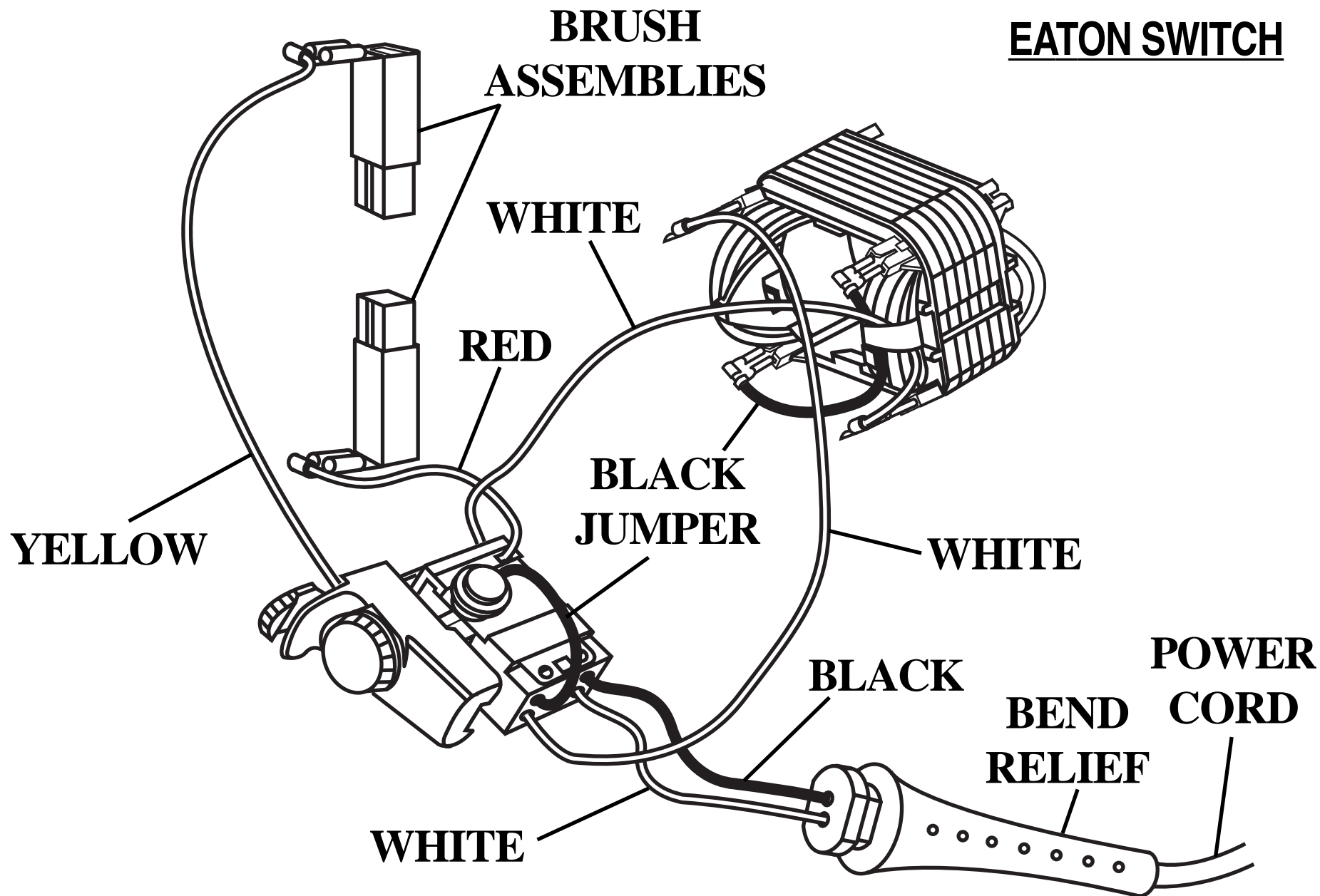
The model number will be found on a plate attached to the motor housing. Always mention the model number in all correspondence regarding your **1/2 INCH HAMMER DRILL** or when ordering repair parts.

PARTS LIST

KEY NO.	PART NUMBER	DESCRIPTION	QUAN.	KEY NO.	PART NUMBER	DESCRIPTION	QUAN.
1	968702-009	SCREW (#8-16 X 5/8 IN. PAN HD.)	6	19	931744-063	WASHER	2
2	975502-001	DATA PLATE	1	20	968308-037	GEAR AND PINION	1
3	974153-001	HOUSING ASSEMBLY	1	21	990962-001	SLEEVE BEARING	1
4	972895-006	AUXILIARY HANDLE	1	22	703774-005	BALL	1
5	886165-000	DEPTH GAGE ROD	1	23	968308-036	GEAR AND SPINDLE ASSEMBLY	1
6	973825-001	CLAMP ROD	1	24	990963-001	SLEEVE BEARING	1
7	968304-016	BRUSH ASSEMBLY	2	25	974166-001	GEAR HOUSING W/BEARINGS (INCLUDES KEY NOS. 21 AND 24)	1
8	990839-001	BRUSH TUBE	2	26	968703-013	SCREW (#8-32 X 7/8 IN. PAN HD. T.F.)	4
9	968307-129	FIELD ASSEMBLY	1	27	973869-001	1/2 IN. CHUCK	1
10	611135-005	SLEEVE BEARING	1	28	613150-003	SCREW (5/16-24 X 7/8 IN. FIL. HD. LEFT HAND)	1
11	975504-001	SWITCH	1	29	606858-001	CHUCK KEY	1
12	968306-137	ARMATURE	1	30	972156-005	CORD ASSEMBLY	1
13	974190-005	YELLOW LEAD	1	31	972923-002	ADJUSTMENT BUTTON	1
14	974190-004	RED LEAD	1	32	974156-001	LOGO PLATE	1
15	623019-003	RUBBER PLUG	1	33	968602-001	BEND RELIEF	1
16	968305-010	BALL BEARING (NTN#608ZZ/1E)	1	34	967917-001	CORD CLAMP	1
17	974164-001	ADJUSTMENT ROD W/PIN	1	35	968700-007	SCREW (#6-19 X 1/2 IN. PAN HD.)	2
18	972780-002	BEARING PLATE W/BEARINGS (INCLUDES KEY NO. 16)	1		972000-401	OWNER'S MANUAL	



WIRING DIAGRAM



WIRING DIAGRAM