

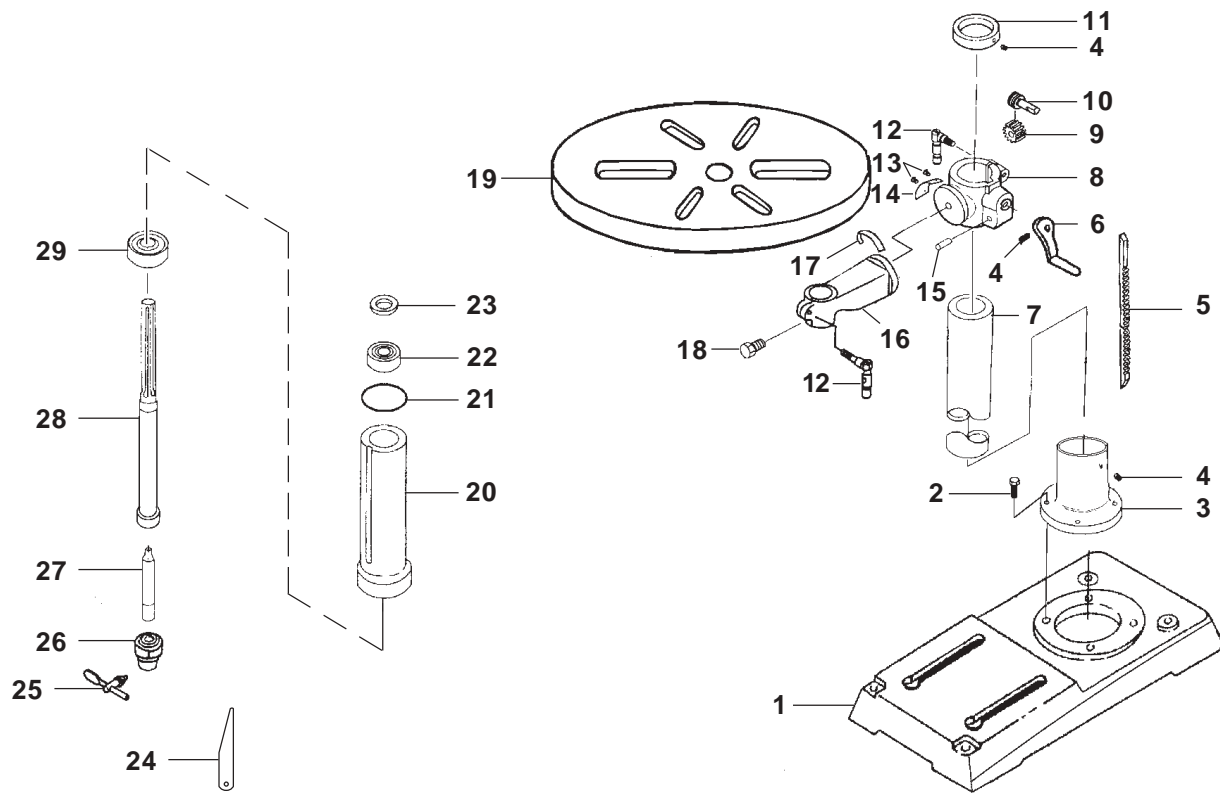
**RYOBI**

**12 in. (305 mm) DRILL PRESS**

**MODEL NO. DP120**

**REPAIR SHEET**

FIGURE A



## RYOBI 12 in. (305 mm) DRILL PRESS – MODEL NUMBER DP120

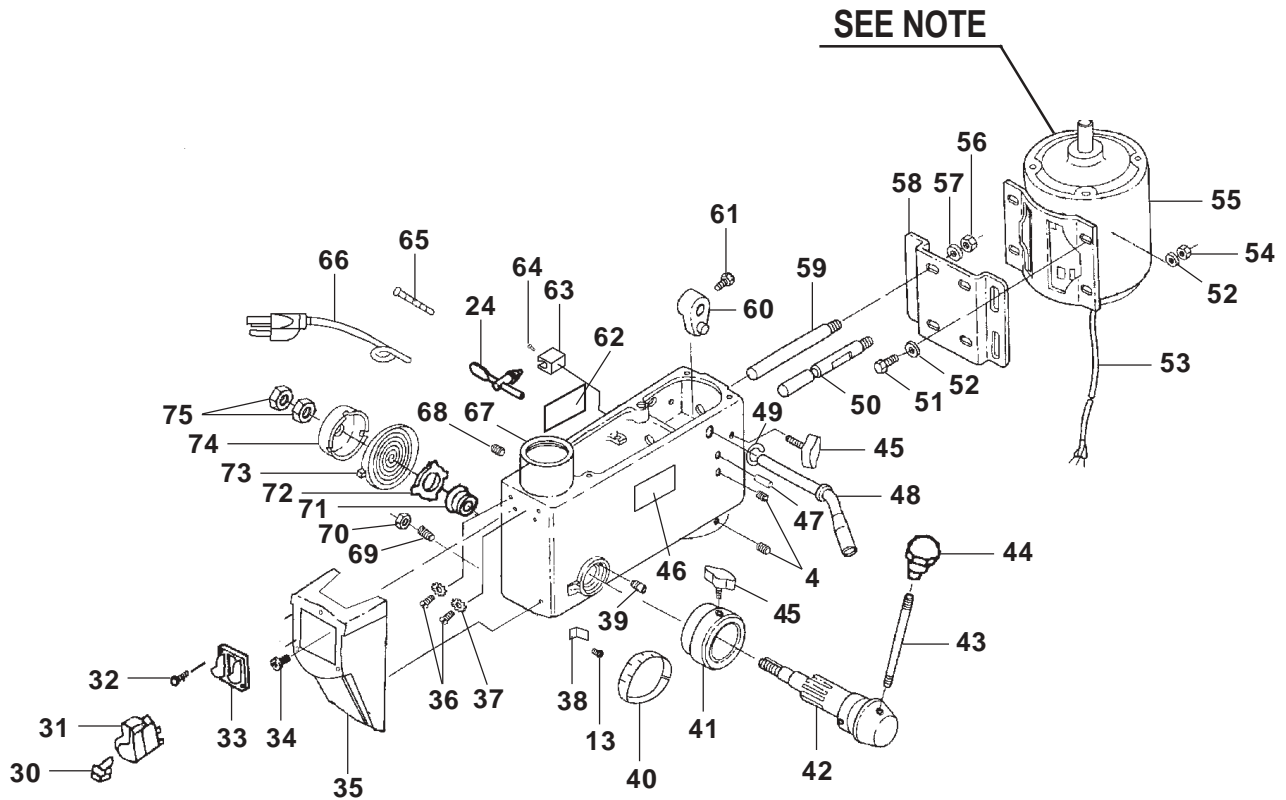
The model number will be found on a plate attached to the motor housing. Always mention the model number in all correspondence regarding your **Drill Press** or when ordering repair parts.

### PARTS LIST FOR FIGURE A

| Key<br>No. | Part<br>Number | Description                           | Qty. |
|------------|----------------|---------------------------------------|------|
| 1          | 13401001       | BASE .....                            | 1    |
| 2          | TDP12B03008    | * SCREW, HEX HEAD (M10 X 25 mm) ..... | 4    |
| 3          | 13401002A      | BASE COLLAR .....                     | 1    |
| 4          | TDP12B03011    | * SCREW, HEX HEAD (M8 X 8 mm) .....   | 5    |
| 5          | 13201010       | GEAR RACK .....                       | 1    |
| 6          | 16101009A      | TABLE CRANK HANDLE .....              | 1    |
| 7          | 13401003A      | TUBE COLUMN/PEDESTAL .....            | 1    |
| 8          | 13401004B      | TABLE SUPPORT W/SCALE .....           | 1    |
| 9          | 13201006       | GEAR .....                            | 1    |
| 10         | 13201008       | ELEVATION WORM .....                  | 1    |
| 11         | 13401011A      | COLUMN COLLAR .....                   | 1    |
| 12         | 16101013B      | TABLE CLAMP .....                     | 2    |
| 13         | TDP12B03002    | * SCREW (M4 X 6 mm) .....             | 3    |
| 14         | 13406002A      | INDICATOR FOR TABLE .....             | 1    |
| 15         | 13201007       | SHAFT GEAR .....                      | 1    |
| 16         | 13401005       | TABLE ARM .....                       | 1    |
| 17         | 13406001       | SCALE FOR BRACKET .....               | 1    |
| 18         | TDP12B03009    | * SCREW, HEX HEAD (M12 X 25 mm) ..... | 1    |
| 19         | 13401014B      | TABLE .....                           | 1    |
| 20         | 13303002       | SPINDLE HOUSING .....                 | 1    |
| 21         | 13303006       | GASKET .....                          | 1    |
| 22         | TDP12B02001    | BEARING BALL .....                    | 2    |
| 23         | TDP12B18001    | LOCKING RING .....                    | 1    |
| 24         | 16103008       | CHUCK TOOL .....                      | 1    |
| 25         | 13103006M-1    | CHUCK KEY .....                       | 1    |
| 26         | 13103006M      | CHUCK .....                           | 1    |
| 27         | 13403007       | ARBOR .....                           | 1    |
| 28         | 13303001       | SPINDLE .....                         | 1    |
| 29         | TDP12B02002    | BEARING .....                         | 1    |

\* Standard Hardware Item — May Be Purchased Locally

FIGURE B



**NOTE:** The assembly shown represents an important part of the double insulated system. To avoid the possibility of alteration or damage to the system, service should be performed by your nearest Ryobi Authorized Service Center. For the service center nearest you call 1-800-525-2579.

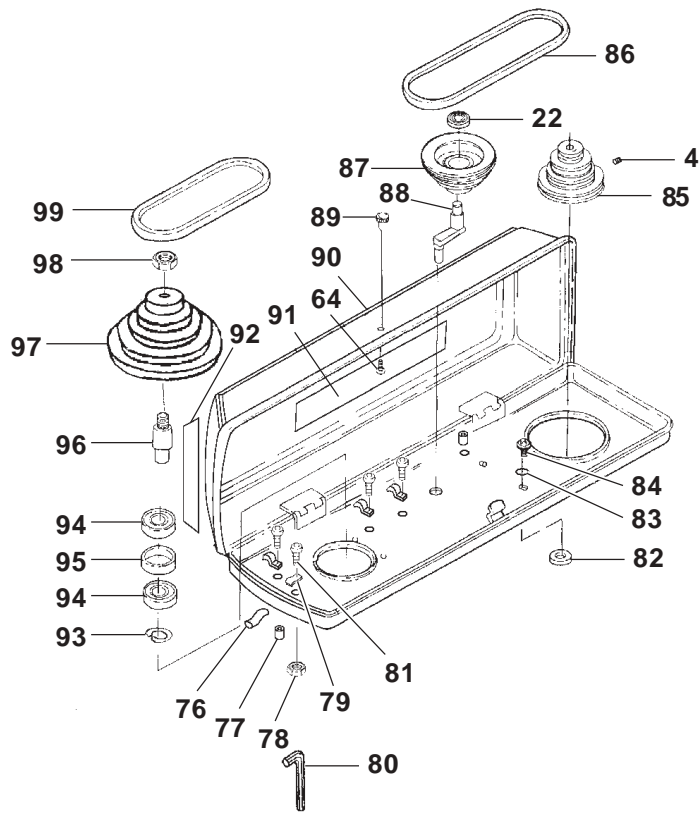
## RYOBI 12 in. (305 mm) DRILL PRESS – MODEL NUMBER DP120

The model number will be found on a plate attached to the motor housing. Always mention the model number in all correspondence regarding your **Drill Press** or when ordering repair parts.

### PARTS LIST FOR FIGURE B

| Key No. | Part Number | Description                             | Qty. |
|---------|-------------|---|------|
| 30      | 16102010G-1 | SWITCHKEY .....                         | 1    |
| 31      | 16102010G   | SWITCH .....                            | 1    |
| 32      | TDP07005    | * TAPPING SCREW (ST 4.2 X 9.5 mm) ..... | 2    |
| 33      | 13202009F   | SWITCHPLATE .....                       | 1    |
| 34      | TDP07001    | * SCREW (M5 X 14 mm) .....              | 2    |
| 35      | 13202008B-1 | SWITCH HOUSING .....                    | 1    |
| 36      | TDP07001    | * SCREW, PAN HEAD (M5 X 6 mm) .....     | 2    |
| 37      | TDP08001    | LOCK WASHER .....                       | 2    |
| 38      | 13406003    | STROKE INDICATOR .....                  | 1    |
| 39      | 16104010    | STOP PIN .....                          | 1    |
| 40      | 13406004    | DEPTH STOP SCALE RING .....             | 1    |
| 41      | 13304003    | DEPTH STOP RING .....                   | 1    |
| 42      | 13304000    | HUB .....                               | 1    |
| 43      | 13204005A   | FEED HANDLE .....                       | 3    |
| 44      | 13304011C   | KNOB .....                              | 3    |
| 45      | 13402005    | TENSION KNOB .....                      | 3    |
| 46      | 13206007J   | WARNING LABEL .....                     | 1    |
| 47      | TDP09001    | ROLL PIN .....                          | 2    |
| 48      | 13402004    | BELT TENSION HANDLE .....               | 1    |
| 49      | TDP12B10001 | SHAFT RETAINER .....                    | 1    |
| 50      | 13402002    | MOTOR SUPPORT .....                     | 1    |
| 51      | TDP01001    | * SCREW (M8 X 20 mm) .....              | 4    |
| 52      | TDP11002    | WASHER .....                            | 8    |
| 53      | 13302016Y   | MOTOR CORD .....                        | 1    |
| 54      | TDP06001    | HEX NUT .....                           | 4    |
| 55      | YCG77S4-01  | MOTOR .....                             | 1    |
| 56      | TDP06002    | HEX NUT .....                           | 2    |
| 57      | TDP11001    | LOCK WASHER .....                       | 2    |
| 58      | 13402007    | MOTOR SUPPORT .....                     | 1    |
| 59      | 13402003    | MOTOR SUPPORT .....                     | 1    |
| 60      | 16102006    | ADJUSTING LEVER .....                   | 1    |
| 61      | TDP12B03007 | * SCREW (M8 X 16 mm) .....              | 1    |
| 62      | 13406008A   | DATA LABEL .....                        | 1    |
| 63      | 16103011A   | KEY HOLDER .....                        | 1    |
| 64      | TDP07002    | * SCREW (M5 X 12 mm) .....              | 2    |
| 65      | TDP12B20001 | CORD TIE .....                          | 1    |
| 66      | 13302015B-3 | POWER CORD .....                        | 1    |
| 67      | 13402001D   | HEAD .....                              | 1    |
| 68      | TDP03002    | * SCREW (M8 X 8 mm) .....               | 1    |
| 69      | 13202021    | SPECIAL SET SCREW .....                 | 1    |
| 70      | TDP06001    | HEX NUT .....                           | 1    |
| 71      | 13204006    | SPRING SEAT .....                       | 1    |
| 72      | 16104007A   | SPRING RETAINER .....                   | 1    |
| 73      | 16104009    | TORSION SPRING .....                    | 1    |
| 74      | 16104008    | SPRING CAP .....                        | 1    |
| 75      | TDP12B06005 | HEX NUT .....                           | 2    |

FIGURE C



## RYOBI 12 in. (305 mm) DRILL PRESS – MODEL NUMBER DP120

The model number will be found on a plate attached to the motor housing. Always mention the model number in all correspondence regarding your **Drill Press** or when ordering repair parts.

### PARTS LIST FOR FIGURE C

| Key No. | Part Number | Description                | Qty. |
|---------|-------------|----------------------------|------|
| 76      | 13402027    | CLAMP COVER .....          | 3    |
| 77      | 20105012    | RUBBER BUSHING .....       | 2    |
| 78      | TDP12B06001 | NUT .....                  | 3    |
| 79      | 13202014A   | CORD CLAMP .....           | 4    |
| 80      | TDP04001    | HEX WRENCH .....           | 1    |
| 81      | TDP07004    | * SCREW (M5 X 10 mm) ..... | 4    |
| 82      | 13105009    | FOAM WASHER .....          | 4    |
| 83      | TDP12B11004 | WASHER .....               | 4    |
| 84      | TDP12B03006 | * SCREW (M6 X 8 mm) .....  | 4    |
| 85      | 13405005A   | MOTOR PULLEY .....         | 1    |
| 86      | 13405007B   | BELT .....                 | 1    |
| 87      | 13405008A   | IDLER PULLEY .....         | 1    |
| 88      | 13205009    | IDLER PIVOT .....          | 1    |
| 89      | 13205008    | KNOB .....                 | 1    |
| 90      | 13405000    | PULLEY/BELT HOUSING .....  | 1    |
| 91      | 13406009C   | SPEED CHART .....          | 1    |
| 92      | 13406006F   | LOGO PLATE .....           | 1    |
| 93      | TDP10002    | SHAFT RETAINER .....       | 1    |
| 94      | TDP02001    | BEARING .....              | 2    |
| 95      | 13302023A   | SPACER .....               | 1    |
| 96      | 13302022    | PULLEY INSERT .....        | 1    |
| 97      | 13405006A   | SPINDLE PULLEY .....       | 1    |
| 98      | 13302025    | NUT .....                  | 1    |
| 99      | 13405007    | BELT .....                 | 1    |
|         | 983000-040  | OPERATOR'S MANUAL          |      |
|         | 983000-040R | REPAIR SHEET               |      |
|         | 8-11-04     |                            |      |