

**RYOBI 3/8 in.**

**120 VOLT**

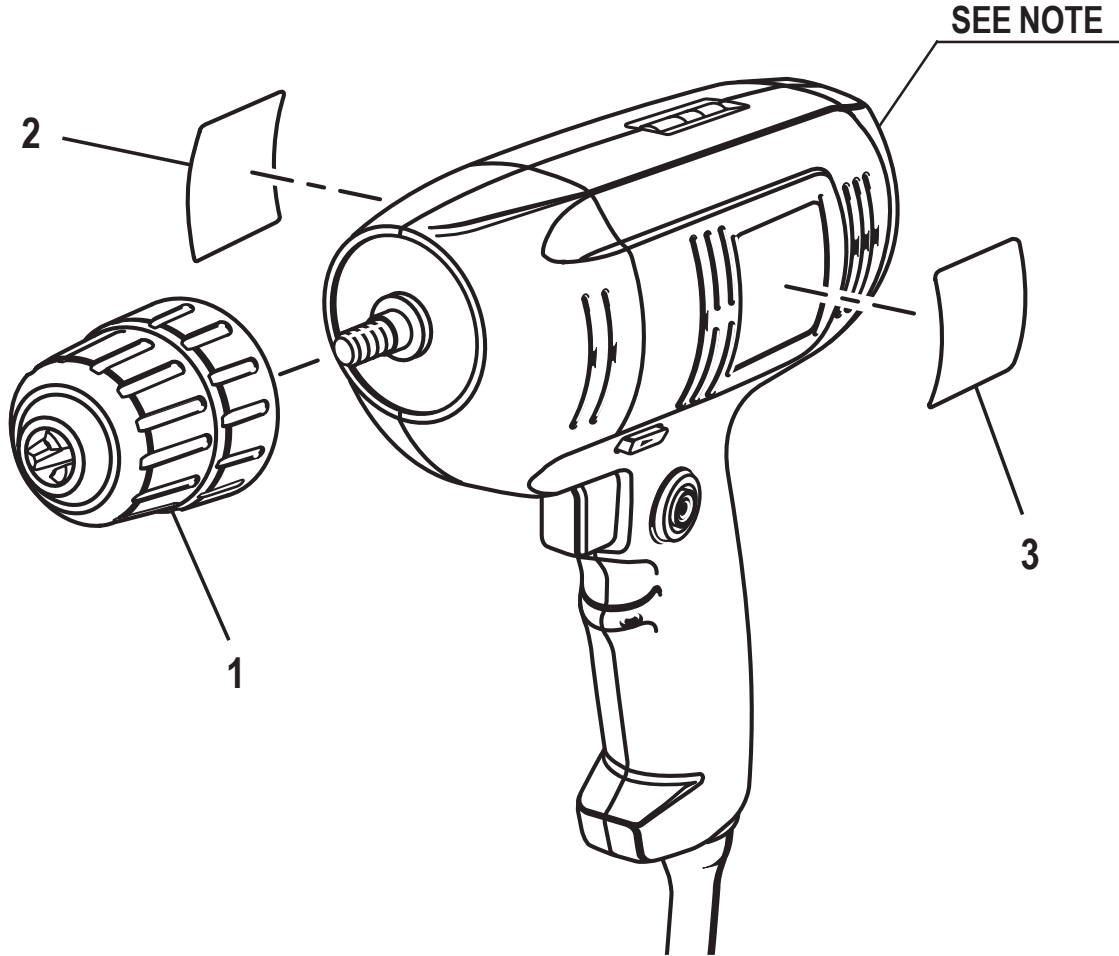
**VARIABLE SPEED REVERSIBLE DRILL**

**MODEL NO. D40**

**REPAIR SHEET**

**RYOBI 3/8 in. DRILL – MODEL NO. D40**

The model number will be found on a plate attached to the motor housing. Always mention the model number in all correspondence regarding your 3/8 in. DRILL or when ordering repair parts.

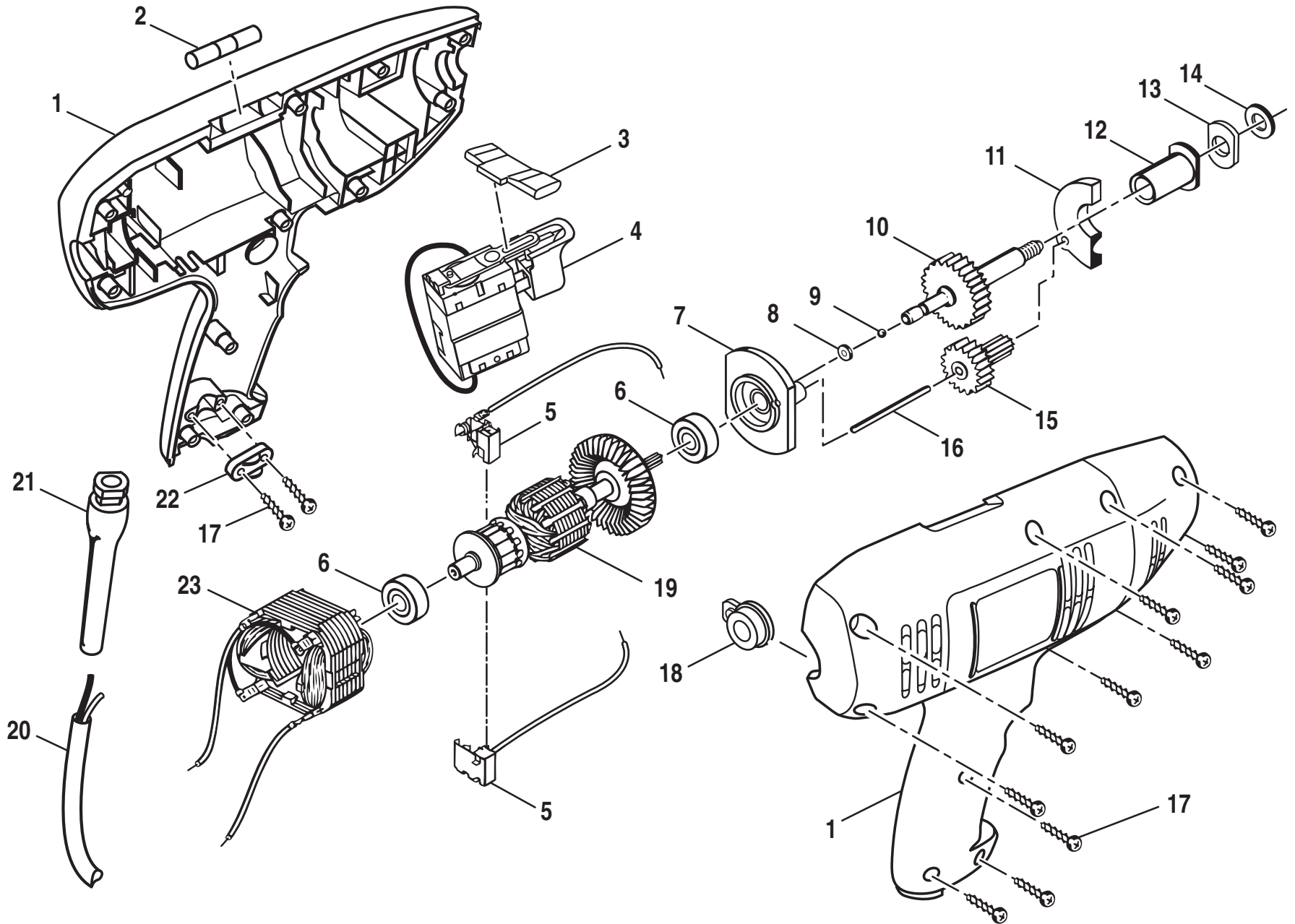


**PARTS LIST**

Key No.	Part Number	Description	Qty.
1	6903201	CHUCK.....	1
2	9418678	DATA PLATE.....	1
3	9418536	LOGO PLATE.....	1

**NOTE:** The assembly shown represents an important part of the double insulated system. To avoid the possibility of alteration or damage to the system, service should be performed by your nearest Ryobi Authorized Service Center. For the service center nearest you call 1-800-525-2579.

RYOBI 3/8 in. DRILL – MODEL NO. D40



**RYOBI 3/8 in. DRILL – MODEL NO. D40**

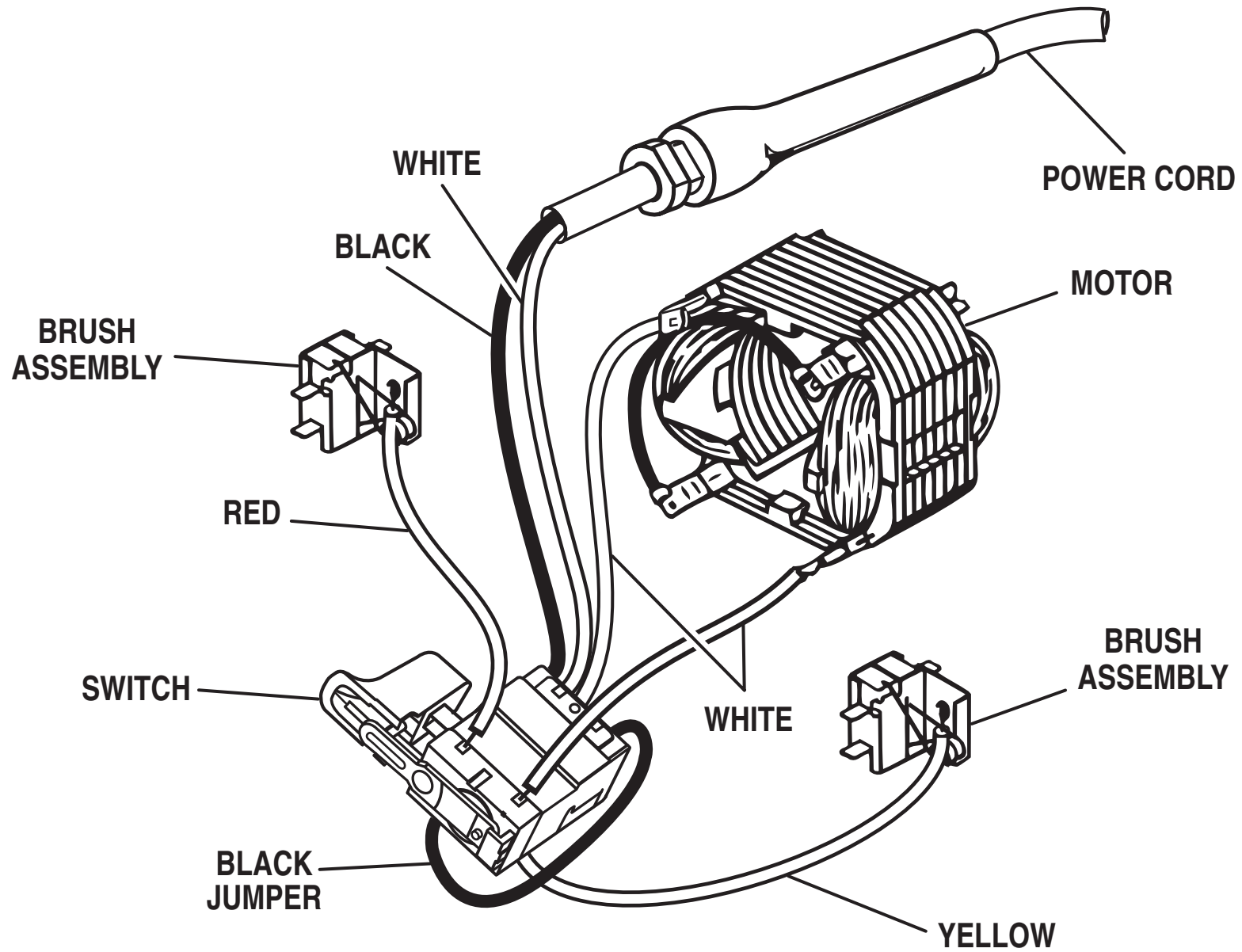
The model number will be found on a plate attached to the motor housing. Always mention the model number of your **3/8 in. DRILL** when requesting service or ordering repair parts.

**PARTS LIST**

<b>KEY NO.</b>	<b>PART NUMBER</b>	<b>DESCRIPTION</b>	<b>QTY.</b>
1	984419-001	HOUSING ASSEMBLY .....	1
2	3000905	LEVEL ASSEMBLY .....	1
3	5917601	FOWARD/REVERSE SELECTOR .....	1
4	7622601	SWITCH .....	1
5	2906906	BRUSH ASSEMBLY .....	2
6	6710903	BALL BEARING .....	2
7	6967101	REAR BEARING BLOCK .....	1
8	6861601	THRUST WASHER .....	1
9	6861701	BALL .....	1
10	984421-001	GEAR W/SPINDLE .....	1
11	6967201	FRONT BEARING BLOCK .....	1
12	6861402	SLEEVE BEARING .....	1
13	9030306	FELT SEAL .....	1
14	6844703	WASHER .....	1
15	984422-001	CLUSTER GEAR ASSEMBLY .....	1
16	6953701	PIN .....	1
17	6620606	* SCREW (M3.5 X 16 mm) .....	13
18	3048001	REAR LEVEL ASSEMBLY .....	1
19	984590-001	ARMATURE W/BEARINGS (INCLUDES KEY NO. 6) .....	1
20	7333002	POWER CORD .....	1
21	5927402	BEND RELIEF .....	1
22	5917401	CORD CLAMP .....	1
23	984589-001	FIELD .....	1
24	300636070	CARRYING CASE (NOT SHOWN) .....	1
	983000-032	OPERATOR'S MANUAL	
	983000-032R	REPAIR SHEET (REV:00)	
	12-10-04		

**WARNING: Improper repair of a double insulated tool can result in damage to the double insulation system possibly causing electrical shock or electrocution. Any repairs requiring disassembly of your tool requires safety testing and should only be performed by a Ryobi Authorized Service Center. For the service center nearest you call 1-800-525-2579.**

\* Standard Hardware Item – May Be Purchased Locally



**WIRING DIAGRAM**