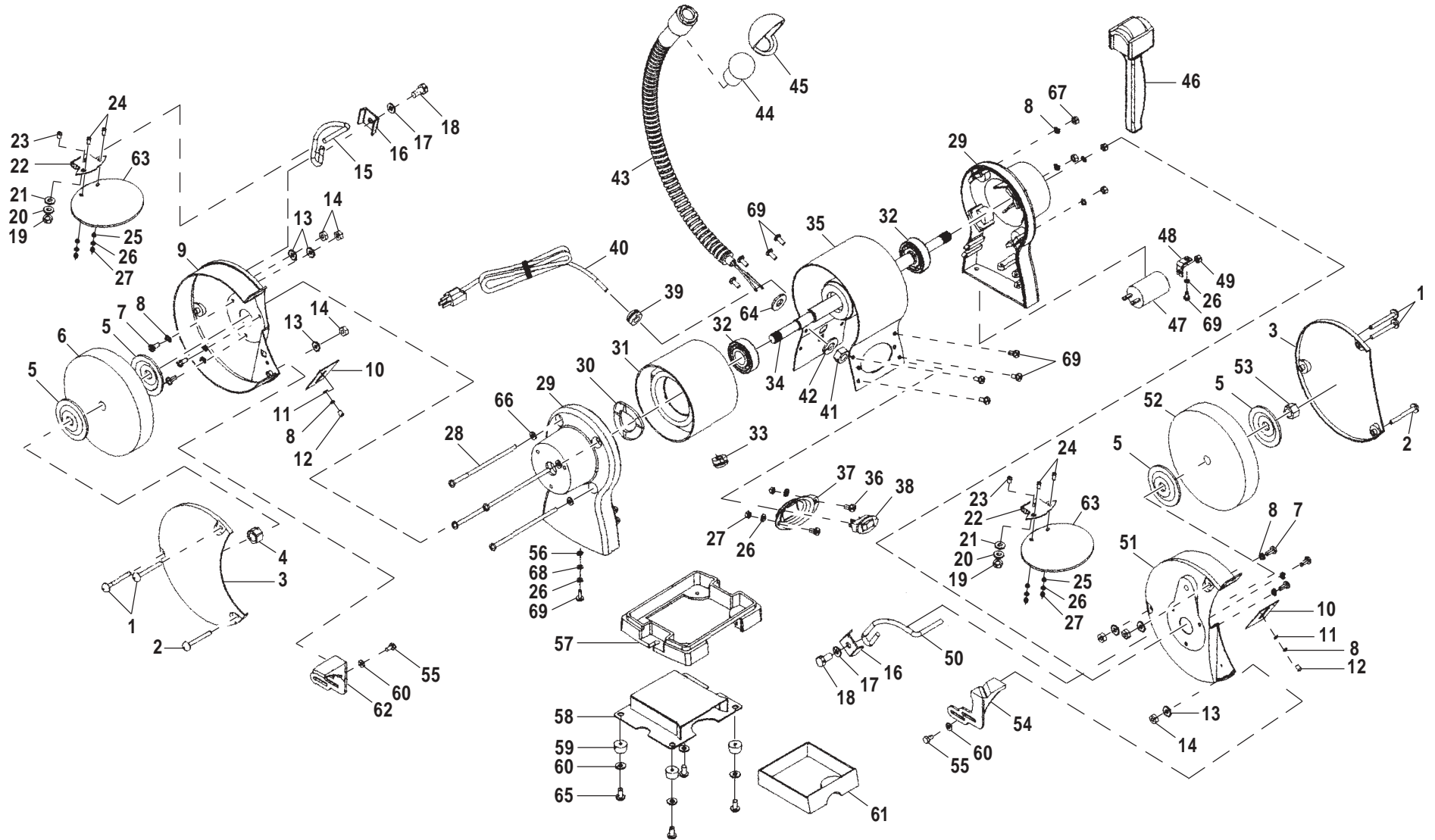


RYOBI
8 in. BENCH GRINDER
MODEL NO. BGH826
REPAIR SHEET

RYOBI 8 in. BENCH GRINDER – MODEL NUMBER BGH826



RYOBI 8 in. BENCH GRINDER – MODEL NUMBER BGH826

The model number will be found on a plate attached to the motor housing. Always mention the model number in all correspondence regarding your **Bench Grinder** or when ordering repair parts.

PARTS LIST

Key No.	Part Number	Description	Qty.	Key No.	Part Number	Description	Qty.
1	800206	* SCREW (M5 X 45 mm)	4	20	601104	* LOCK WASHER (6 mm)	2
2	803802	* SCREW (M5 X 50 mm)	2	21	601204	* WASHER (6 mm)	2
3	800302	WHEEL COVER	2	22	601302	EYESHIELD BRACKET	2
4	800401	* HEX NUT LEFT SIDE (M16)	1	23	601402	* CARRIAGE BOLT (M6 X 16 mm)	2
5	800504	WHEEL FLANGE	4	24	601504	* SCREW (M4 X 10 mm)	4
6	803602	* WHEEL (36#) (200 X 25 X 15.88 mm)	1	25	601610	* WASHER (4 mm)	4
7	600112	* SCREW (M5 X 10 mm)	6	26	601711	* LOCK WASHER (4 mm)	8
8	600212	* LOCK WASHER (5 mm)	12	27	601808	* HEX NUT (M4)	6
9	803902	LEFT WHEEL GUARD	1	28	800904	* SCREW (M5 X 130 mm)	4
10	800702	SPARK DEFLECTOR	2	29	801002	END CAPS	2
11	600306	* WASHER (5 mm)	2	30	801101	WAVY WASHER	1
12	604704	* SCREW (M5 X 8 mm)	2	31	801202	STATOR	1
13	800806	* TOOTHED LOCK WASHER (5 mm)	6	32	801302	BEARING	2
14	600506	* HEX NUT (M5)	6	33	601901	CORD BUSHING	1
15	600601	LEFT EYESHIELD MOUNT ROD	1	34	801402	ROTOR	1
16	600702	EYESHIELD MOUNT ROD BRACKET	2	35	801501	MOTOR HOUSING	1
17	600806	* WASHER (8 mm)	2	36	602003	* SCREW (M4 X 8 mm)	2
18	600902	* HEX BOLT (M8 X 14 mm)	2	37	801601	SWITCH PLATE	1
19	601002	* HEX NUT (M6)	2	38	602101	SWITCH	1

WARNING: Improper repair of a double insulated tool can result in damage to the double insulation system possibly causing electrical shock or electrocution. Any repairs requiring disassembly of your tool requires safety testing and should only be performed by a Ryobi Authorized Service Center. For the service center nearest you call 1-800-525-2579.

* Standard Hardware Item – May Be Purchased Locally

RYOBI 8 in. BENCH GRINDER – MODEL NUMBER BGH826

The model number will be found on a plate attached to the motor housing. Always mention the model number in all correspondence regarding your **Bench Grinder** or when ordering repair parts.

PARTS LIST

Key No.	Part Number	Description	Qty.	Key No.	Part Number	Description	Qty.
39	602201	CORD CLIP	1	56	602601	* TOOTHED LOCK WASHER (4 mm)	1
40	602301	POWER CORD	1	57	802901	MOTOR BASE	1
41	801701	* HEX NUT (M10 X 1 mm)	1	58	803001	BOTTOM COVER	1
42	801801	* LOCK WASHER (10 mm)	1	59	605404	RUBBER FOOT	4
43	801901	LAMP PIPE	1	60	602704	* WASHER (5 mm)	6
44	See Description	* BULB (12V) No. 93 OR No. 1003 AVAILABLE AT LOCAL AUTO PARTS STORE	1	61	803101	COOLANT TRAY	1
45	802101	LAMP SHADE	1	62	803201	LEFT WORK REST	1
46	802202	WHEEL DRESSER	1	63	803302	EYESHIELD	2
47	802302	CAPACITOR	1	64	803401	WASHER	1
48	802401	CAPACITOR SUPPORT	1	65	800206A	* SCREW (M5 X 45 mm)	4
49	602401	* HEX NUT (M8)	1	66	600306A	* WASHER (5 mm)	4
50	602501	RIGHT EYESHIELD MOUNT ROD	1	67	600506A	* HEX NUT (M5)	4
51	802502	RIGHT WHEEL GUARD	1	68	601610A	* WASHER (4 mm)	1
52	806002	* WHEEL (60#) (200 X 25 X 15.88 mm)	1	69	602003A	* SCREW (M4 X 8 mm)	10
53	802601	* HEX NUT (M16)	1	70	803501	COOLANT TRAY STICKER (NOT SHOWN)	1
54	802701	RIGHT WORK REST	1	71	803703	DATA PLATE (NOT SHOWN)	1
55	802802	* HEX BOLT (M5 X 10 mm)	2	72	803701	DOME LABEL (NOT SHOWN)	1
					972000953	OPERATOR'S MANUAL	
					972000953R	REPAIR SHEET (REV:00)	
					02-16-05		

WARNING: Improper repair of a double insulated tool can result in damage to the double insulation system possibly causing electrical shock or electrocution. Any repairs requiring disassembly of your tool requires safety testing and should only be performed by a Ryobi Authorized Service Center. For the service center nearest you call 1-800-525-2579.

* Standard Hardware Item – May Be Purchased Locally