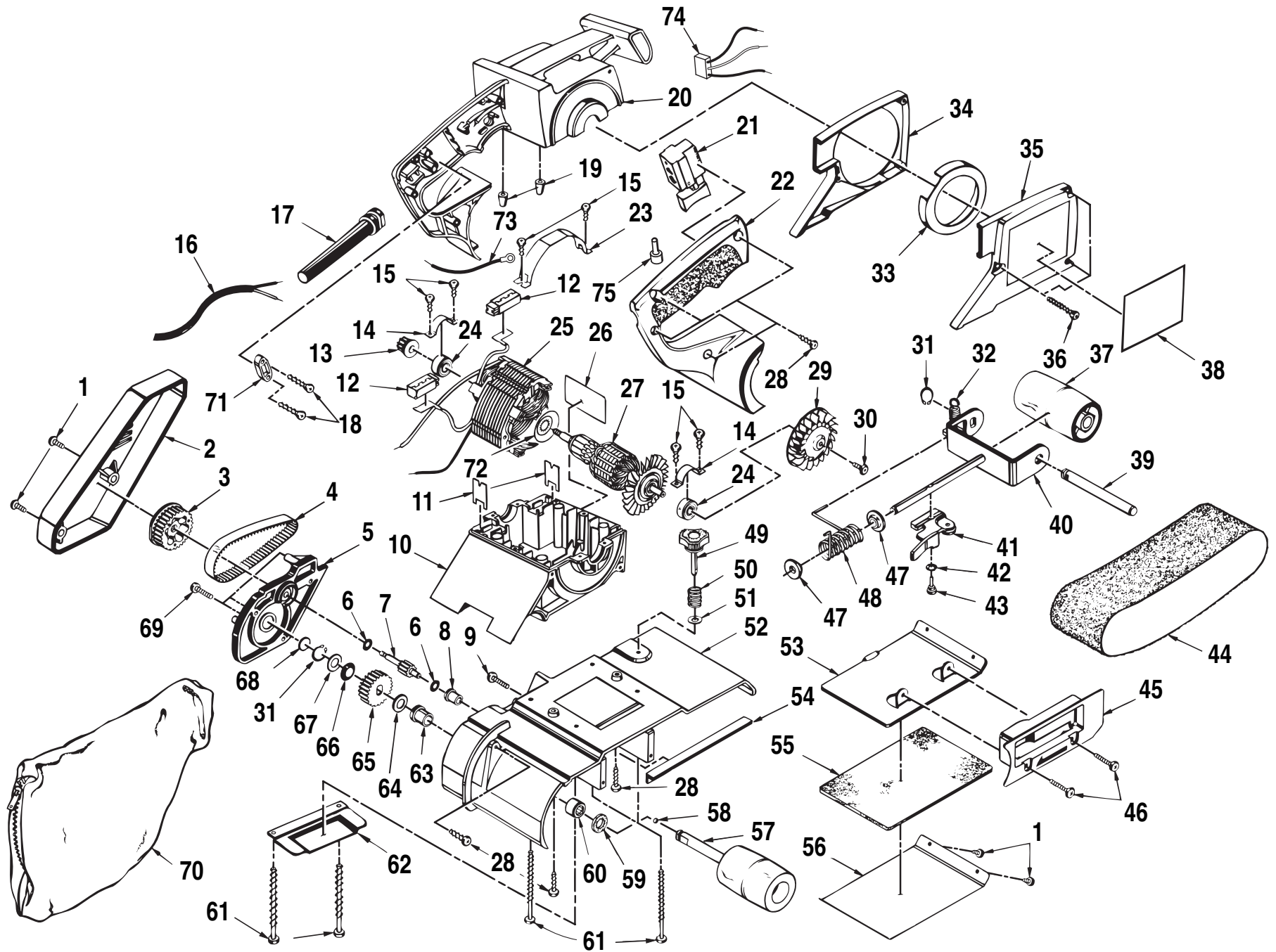


# RYOBI DUSTLESS BELT SANDER - MODEL NUMBER B850



## RYOBI DUSTLESS BELT SANDER - MODEL NUMBER B850

The model number will be found on a plate attached to the motor housing. Always mention the model number in all correspondence regarding your **SANDER** or when ordering repair parts.

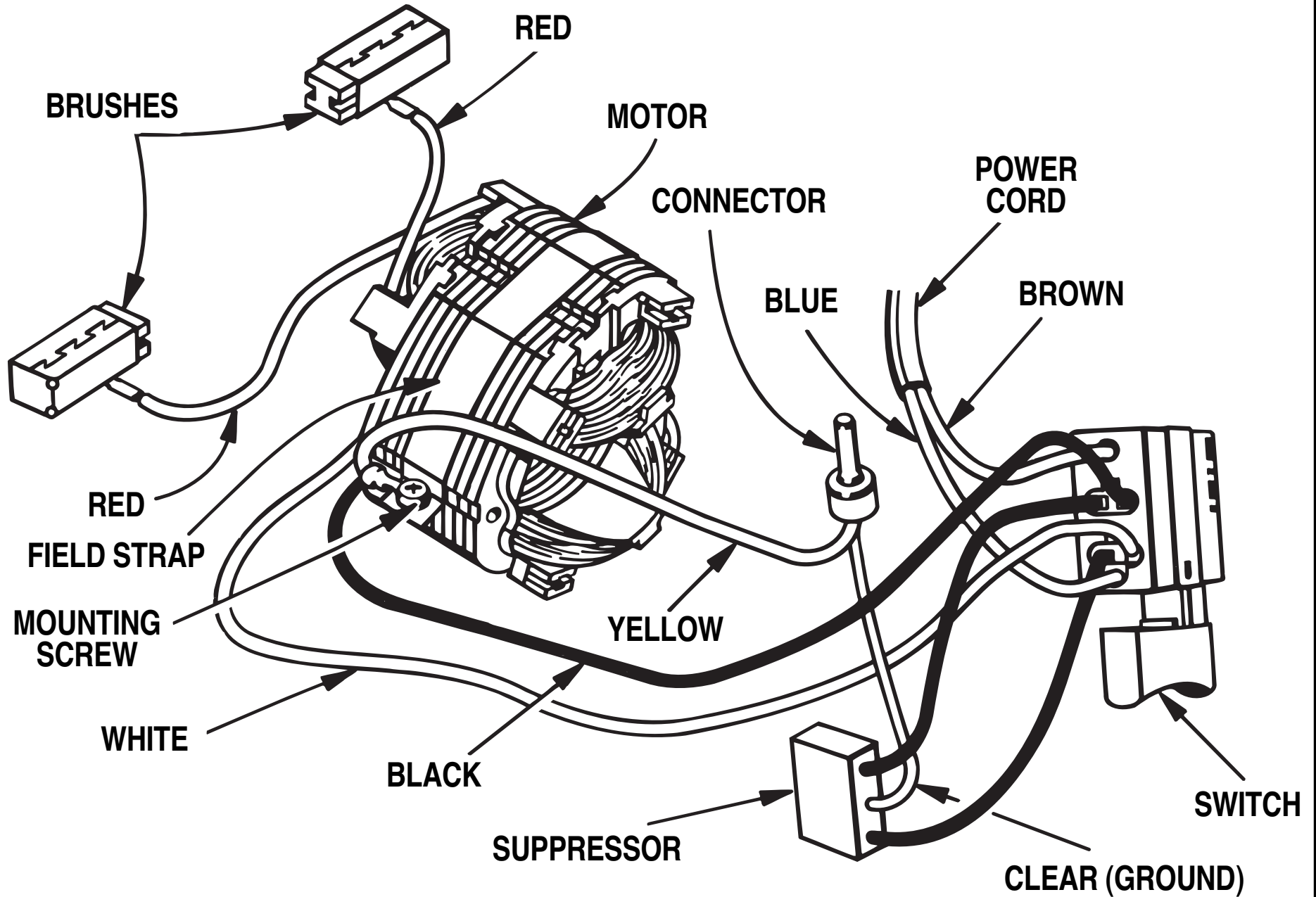
### PARTS LIST

Key No.	Part Number	Description	Quan.	Key No.	Part Number	Description	Quan.
1	970201-001	SCREW (#8-32 X 3/8 IN. PAN HD. T. F.)	4	40	999945-004	YOKE ASSEMBLY W/SPRING (INC. KEY NO. 32)	1
2	998367-001	BELT COVER	1	41	999927-001	RELEASE LEVER ASSEMBLY	1
3	607776-002	DRIVEN PULLEY	1	42	622347-001	WASHER	1
4	989185-001	TIMING BELT	1	43	999923-001	SCREW (#10-32 X 1/2 IN. PAN HD.)	1
5	998366-004	GEAR HOUSING COVER W/BEARING	1	44	***	SANDING BELT (75 mm X 534 mm)	1
6	703493-809	WASHER	2	45	967878-002	GLAMOR PLATE	1
7	998423-002	PINION	1	46	612665-006	SCREW (#10-32 X 7/8 IN. PAN HD. T. F.)	2
8	998422-001	FLANGE BEARING	1	47	998370-001	BUSHING	2
9	726693-004	SCREW (#8-32 X 7/8 IN. FIL. HD.)	1	48	998371-001	TORSION SPRING	1
10	999928-001	MOTOR HOUSING	1	49	998372-001	TRACKING KNOB	1
11	967609-001	INSULATOR	2	50	616247-001	SPRING	1
12	968304-001	BRUSH TUBE ASSEMBLY	2	51	931744-059	WASHER	1
13	614251-002	PULLEY	1	52	998364-005	GEAR HOUSING W/BEARINGS (INC. KEY NOS. 8, 59, 60, AND 63)	1
14	606808-002	BEARING STRAP	2	53	998376-002	PLATEN	1
15	989592-006	SCREW (#8-10 X 1/2 IN. FIL. HD.)	6	54	999448-003	WEAR STRIP	1
16	967869-201	CORD	1	55	998378-001	BACKING PAD	1
17	622824-003	BEND RELIEF	1	56	998380-001	WEAR PLATE	1
18	990908-009	SCREW (#6-19 X 5/8 IN. PAN HD.)	2	57	999942-001	DRIVE ROLLER ASSEMBLY	1
19	617834-001	BUMPER	2	58	703774-003	STEEL BALL	1
20	999930-003	MOTOR HOUSING COVER	1	59	999374-002	FELT SEAL	1
21	968303-030	SWITCH	1	60	615971-001	BEARING	1
22	999929-003	HANDLE COVER	1	61	989592-007	SCREW (#8-10 X 2-1/4 IN. FIL. HD.)	4
23	999934-001	FIELD STRAP	1	62	999347-001	DEFLECTOR	1
24	968305-003	BALL BEARING (NACHI 608ZZ C3/1E)	2	63	714043-003	FLANGE BEARING	1
25	968307-004	FIELD ASSEMBLY	1	64	706239-845	WASHER	1
26	976477-001	DATA PLATE	1	65	968308-002	GEAR	1
27	968306-003	ARMATURE (INC. KEY NOS. 24 AND 72)	1	66	622347-003	SPRING WASHER (ASSEMBLE FLAT SIDE TO GEAR)	1
28	617966-030	SCREW (#8-10 X 5/8 IN. PAN HD.)	7	67	622448-000	WASHER	1
29	999937-001	BLOWER	1	68	616103-301	THRUST WASHER	1
30	998401-001	SCREW (#10-32 X 3/8 IN. WAFER HD.)	1	69	614658-010	SCREW (#8-32 X 3/8 IN. PAN HD.)	3
31	622167-012	RETAINING RING	2	70	998394-003	DUST BAG ASSEMBLY	1
32	998375-001	SPRING	1	71	967917-001	CORD CLAMP	1
33	998393-001	SHROUD	1	72	967927-001	WASHER	1
34	998398-001	BLOWER HOUSING	1	73	967853-006	YELLOW LEAD	1
35	999931-001	BLOWER COVER	1	74	968020-004	SUPPRESSOR	1
36	989592-001	SCREW (#8-10 X 1-1/8 IN. FIL. HD.)	3	75	622165-005	CONNECTOR	1
37	998373-004	IDLER ROLLER W/BEARINGS	1		972000-483	OWNER'S MANUAL	
38	967864-002	LOGO PLATE	1		2-98		
39	999954-002	IDLER ROLLER SHAFT	1				

\*\*\* COMPLETE ASSORTMENT AVAILABLE AT YOUR NEAREST CATALOG ORDER OR RETAIL STORE

**WARNING: IMPROPER REPAIR OF A DOUBLE INSULATED TOOL CAN RESULT IN DAMAGES TO THE DOUBLE INSULATION SYSTEM POSSIBLY CAUSING ELECTRICAL SHOCK OR ELECTROCUTION. ANY REPAIRS REQUIRING DISASSEMBLY OF YOUR TOOL REQUIRES SAFETY TESTING AND SHOULD ONLY BE PERFORMED BY A RYOBI AUTHORIZED SERVICE CENTER OR OTHER QUALIFIED SERVICE ORGANIZATION.**

RYOBI DUSTLESS BELT SANDER - MODEL NUMBER B850



**WIRING DIAGRAM**