

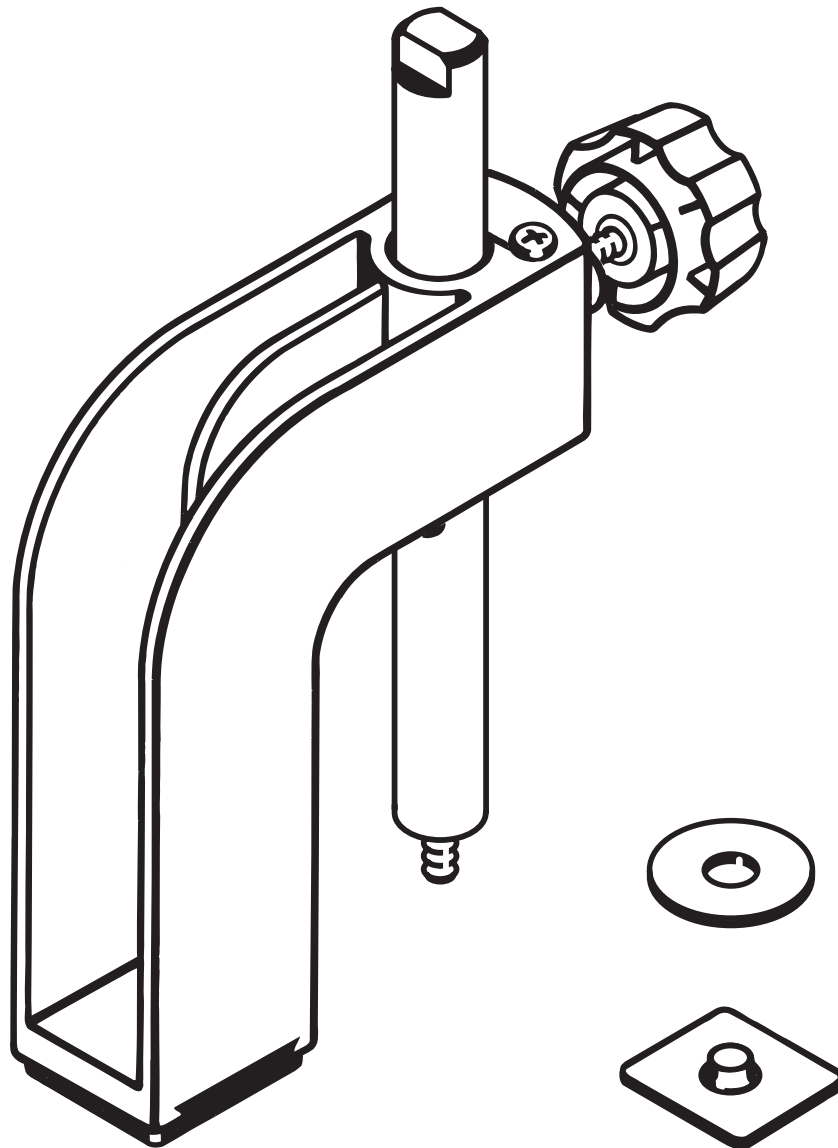


OPERATOR'S MANUAL

Miter Clamping Kit

4710300

(For use with BT3000 & BT3100 Table Saws)



Your new miter clamping kit has been engineered and manufactured to Ryobi's high standard for dependability, ease of operation, and operator safety. Properly cared for, it will give you years of rugged, trouble-free performance.



WARNING: To reduce the risk of injury, the user must read and understand the operator's manual.

Thank you for buying a Ryobi accessory kit.

SAVE THIS MANUAL FOR FUTURE REFERENCE

RULES FOR SAFE OPERATION

Safe operation of this accessory requires that you read and understand this operator's manual, the operator's manual for the table saw and all labels affixed to the tool.

READ ALL INSTRUCTIONS

- **KNOW YOUR ACCESSORY.** Read the operator's manual carefully. Learn the product's applications and limitations as well as the specific potential hazards related to this product.
- **KEEP THE WORK AREA CLEAN.** Cluttered work areas and work benches invite accidents. **DO NOT** leave tools or pieces of wood on the saw while operating.

- **ALWAYS WEAR SAFETY GLASSES WITH SIDE SHIELDS.** Everyday eyeglasses have only impact-resistant lenses; they are **NOT** safety glasses.
- **DO NOT USE THIS PRODUCT WITH OTHER EQUIPMENT** or for other purposes.
- **ALWAYS DISCONNECT THE SAW FROM THE POWER SUPPLY BEFORE ASSEMBLING THIS KIT.** Make sure the switch is off when reconnecting the saw to a power supply.
- **BEFORE MAKING A CUT, BE SURE ALL ADJUSTMENTS ARE SECURE.**
- **SAVE THESE INSTRUCTIONS.** Refer to them frequently and use them to instruct other users. If you loan someone this product, also loan these instructions.

The purpose of safety symbols is to attract your attention to possible dangers. The safety symbols, and the explanations with them, deserve your careful attention and understanding. The safety warnings do not by themselves eliminate any danger. The instructions or warnings they give are not substitutes for proper accident prevention measures.

SYMBOL	MEANING
	SAFETY ALERT SYMBOL: Indicates danger, warning or caution. May be used in conjunction with other symbols or pictographs.
	DANGER: Failure to obey a safety warning will result in serious injury to yourself or to others. Always follow the safety precautions to reduce the risk of fire, electric shock and personal injury.
	WARNING: Failure to obey a safety warning can result in serious injury to yourself or to others. Always follow the safety precautions to reduce the risk of fire, electric shock and personal injury.
	CAUTION: Failure to obey a safety warning may result in property damage or personal injury to yourself or to others. Always follow the safety precautions to reduce the risk of fire, electric shock and personal injury.
	NO HANDS: Failure to keep your hands away from the blade will result in serious personal injury.
	WET CONDITIONS ALERT: Do not expose to rain or use in damp locations.
NOTE:	Advises you of information or instructions vital to the operation or maintenance of the equipment.



SAFETY ALERT SYMBOL: Indicates danger, warning or caution. May be used in conjunction with other symbols or pictographs.



DANGER: Failure to obey a safety warning will result in serious injury to yourself or to others. Always follow the safety precautions to reduce the risk of fire, electric shock and personal injury.



WARNING: Failure to obey a safety warning can result in serious injury to yourself or to others. Always follow the safety precautions to reduce the risk of fire, electric shock and personal injury.



CAUTION: Failure to obey a safety warning may result in property damage or personal injury to yourself or to others. Always follow the safety precautions to reduce the risk of fire, electric shock and personal injury.



NO HANDS: Failure to keep your hands away from the blade will result in serious personal injury.



WET CONDITIONS ALERT: Do not expose to rain or use in damp locations.

NOTE:

Advises you of information or instructions vital to the operation or maintenance of the equipment.



The operation of any power tool can result in foreign objects being thrown into your eyes, which can result in severe eye damage. Before beginning tool operation, always wear safety goggles or safety glasses with side shields and a full face shield when needed. We recommend Wide Vision Safety Mask for use over eyeglasses or standard safety glasses with side shields. Always wear eye protection which is marked to comply with ANSI Z87.1.

SAVE THESE INSTRUCTIONS

UNPACKING

INFORMATION

Your miter clamping kit includes a miter clamp and the connecting hardware necessary to assemble and attach the miter clamp to the miter fence of your saw.

NOTE: This kit applies downward and inward pressure to the workpiece. The kit snugly pulls the workpiece against the miter fence up to a maximum of 1/16 in.

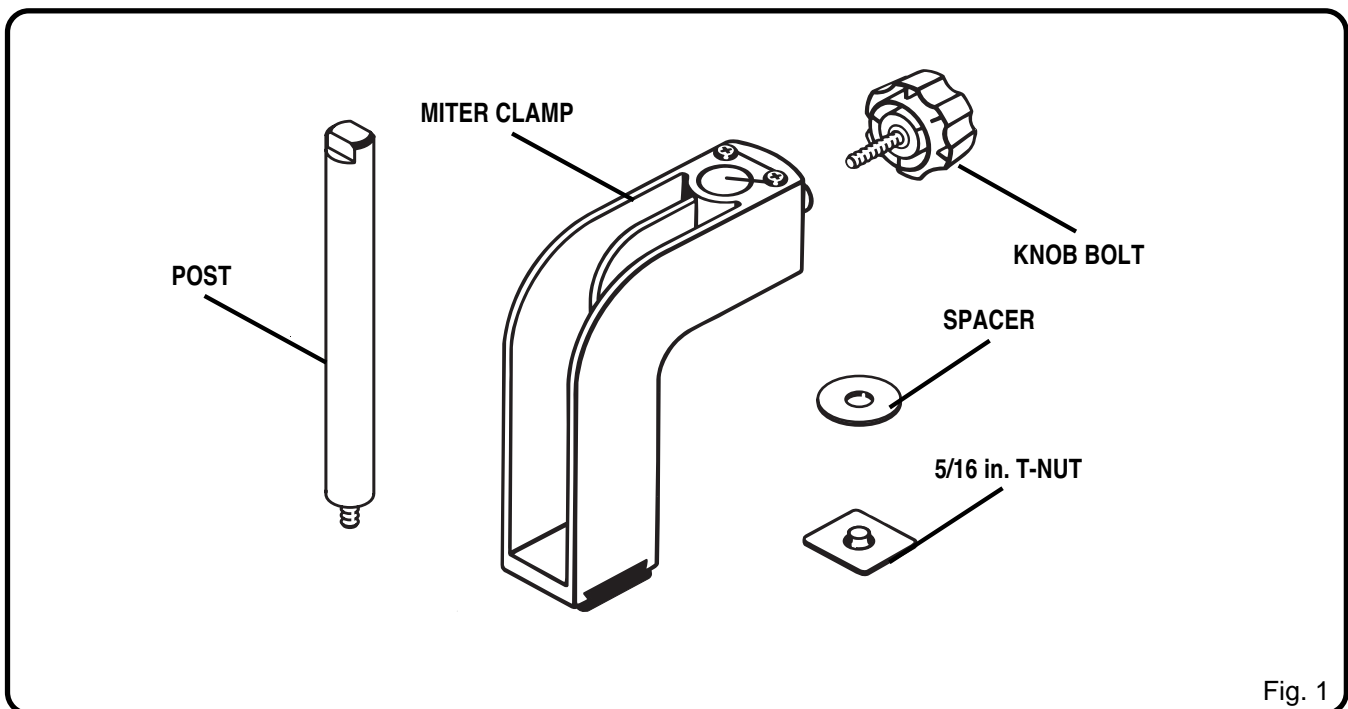
- Remove the loose parts from the box. Make sure that all items listed in the loose parts list are included.
- Inspect all parts carefully to make sure no breakage or damage occurred during shipping.
- If any parts are damaged or missing, please call 1-800-525-2579 for assistance.

⚠ WARNING:

If any parts are missing do not assemble the kit until the missing parts are replaced. Failure to do so could result in serious personal injury.

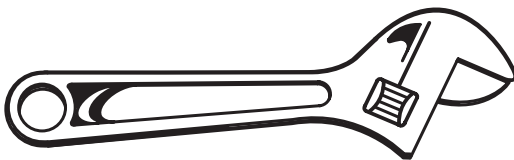
LOOSE PARTS LIST

1. Post
2. Miter Clamp
3. Knob Bolt #5/16-18 x 1 in.
4. Spacer
5. T-Nut 5/16 in.



TOOLS NEEDED

You need an adjustable wrench to assemble this accessory.



ASSEMBLY

⚠ WARNING:

The table saw should never be connected to a power supply when you are assembling parts. Disconnecting the saw will prevent accidental starting that could cause serious personal injury.

ASSEMBLING THE T-NUT

See Figure 3.

Slide the special 5/16 in. T-nut into the top channel of the miter fence as shown.

ASSEMBLING THE POST

See Figure 3.

- Place the spacer provided on the threaded end of the post.
- Thread the post through the spacer into the 5/16 in. T-nut in the top channel of the miter fence.
- Tighten the post securely with an adjustable wrench.

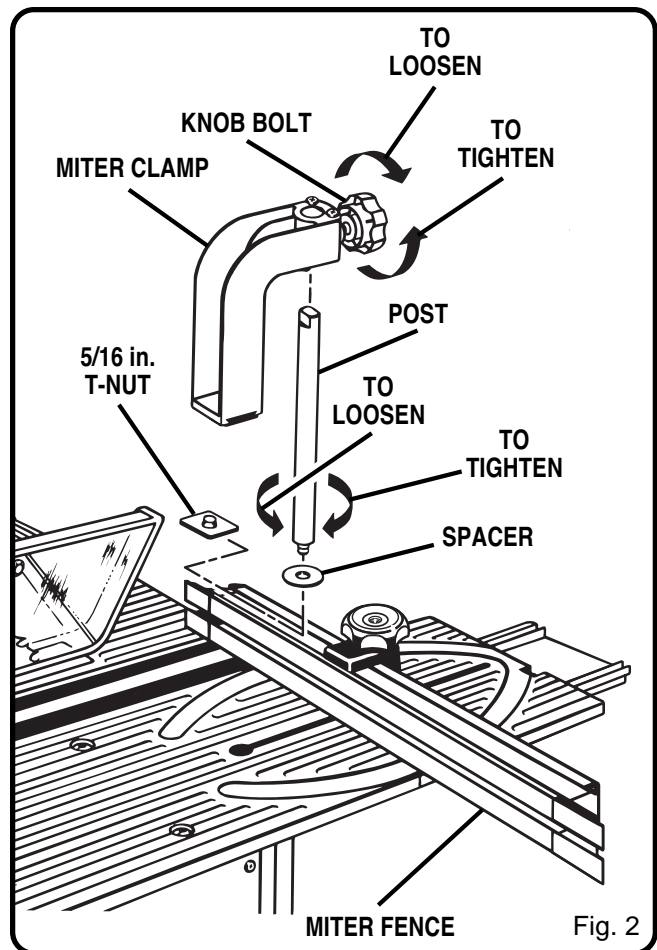
NOTE: The adjustable wrench will fit the flats on top of the post.

ASSEMBLING THE MITER CLAMP

See Figure 2.

NOTE: When the miter clamp is correctly positioned on the post, the clamp is spring loaded. Spring loading holds the miter clamp out of the way while workpieces are placed or removed.

- Loosen the knob bolt threaded into the back of the miter clamp. **DO NOT TIGHTEN THE BOLT UNTIL THE WORKPIECE IS IN THE DESIRED POSITION AND YOU ARE READY TO SECURE THE MITER CLAMPER.**
- Orient the miter clamp as shown.
- Slide and turn the miter clamp on the post to activate the spring. The miter clamp is now spring loaded against the post and will remain in position when you release it.



OPERATION

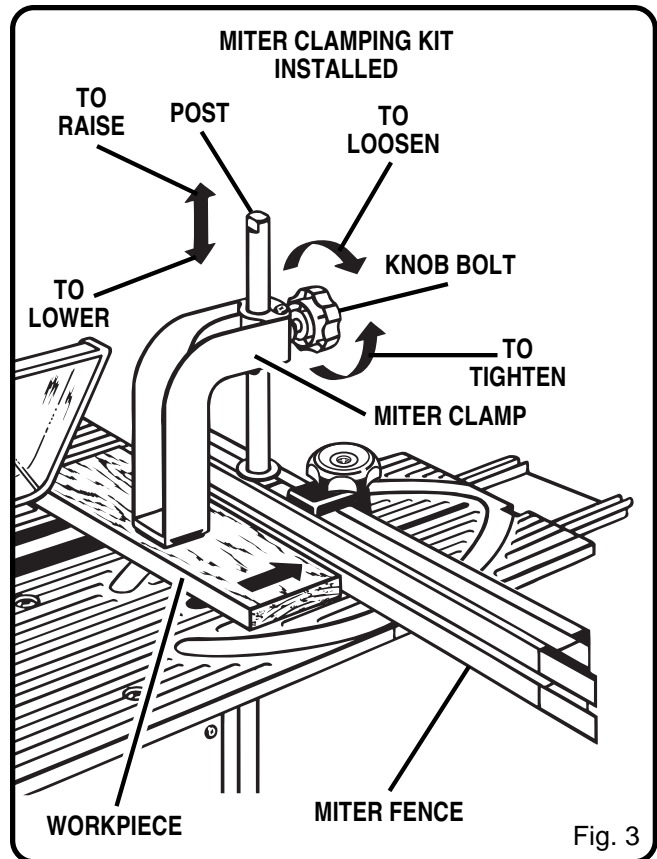
PREPARING FOR CUTTING

See Figure 3.

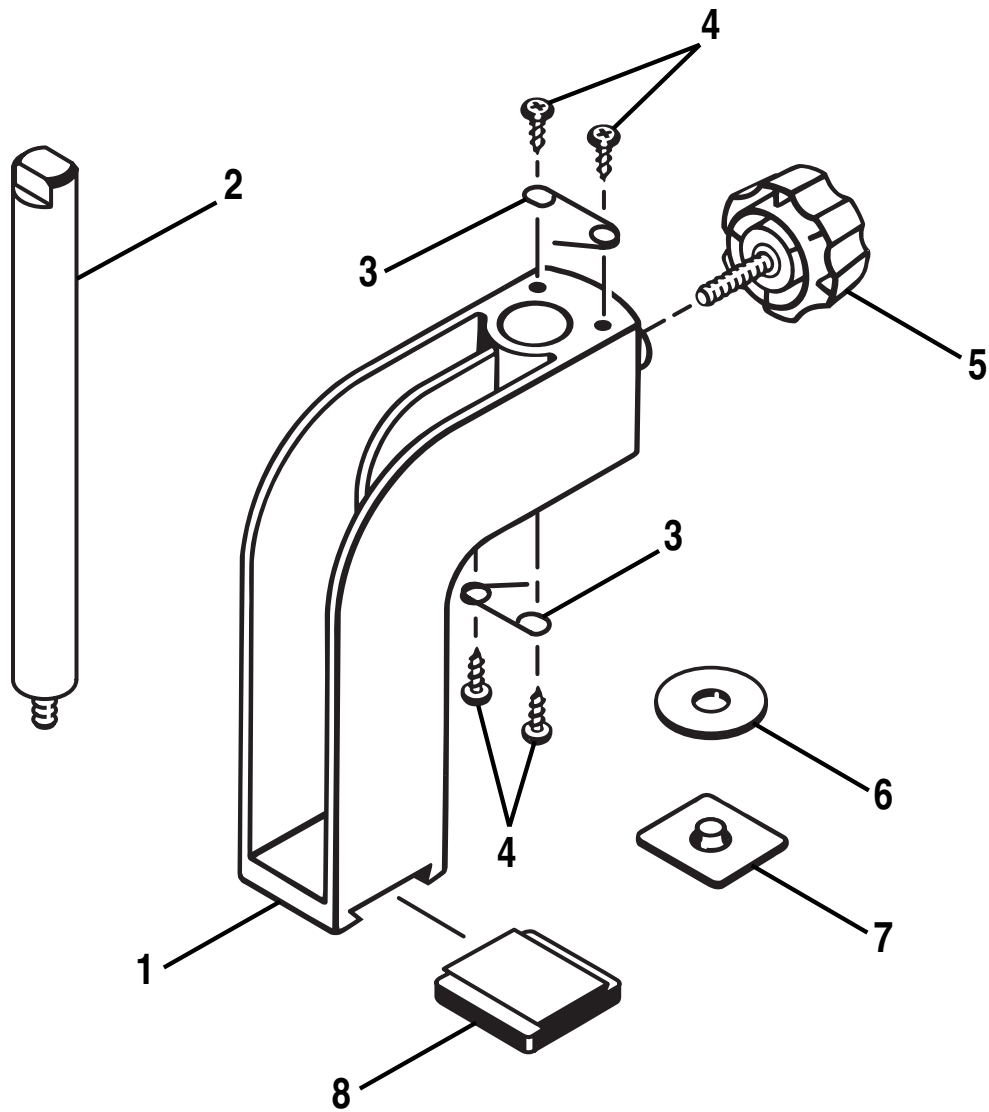
- Place the workpiece in the desired position against the saw's miter fence.
- Loosen the knob bolt.
- Slide the miter clamp down against the workpiece as shown.
- Tighten the knob bolt securely. As the knob bolt tightens, pressure against the post causes the miter clamp to pull the workpiece inward against the miter fence and down toward the table. As noted above, the miter clamp pulls the workpiece inward up to 1/16 in.

⚠ WARNING

This clamping device provides assistance only; the operator must ensure control of the workpiece at all times. Failure to heed this warning could cause an accident resulting in serious personal injury.



REPLACEMENT PARTS



PARTS LIST

KEY NO.	DESCRIPTION	QUANTITY
1	Miter Clamp	1
2	Post	1
3	Wire Formed Spring	2
4	Screw (#8-32 x 3/8 in. Phillips Pan Head Tapping)	4
5	Knob Bolt (#5/16-18 x 1 in.)	1
6	Spacer	1
7	5/16-18 T-Nut (Special)	1
8	Rubber Clamp Pad.....	1
	Operator's Manual	



OPERATOR'S MANUAL

Miter Clamping Kit

4710300

WARRANTY

Ryobi warrants its accessories for a period of 90 days from the date of purchase. Batteries and chargers are warranted for a period of two years from the date of purchase.

PARTS AND SERVICE

For parts or service, contact your nearest Ryobi authorized service center. Be sure to provide all relevant information when you call or visit. For the location of the authorized service center nearest you, please call 1-800-525-2579 or visit us online at www.ryobitools.com. When ordering parts, always give the model number:

MODEL NUMBER 4710300

RYOBI TECHNOLOGIES INC.

1428 Pearman Dairy Road Anderson, SC 29625
Post Office Box 1207 Anderson, SC 29622
www.ryobitools.com
Phone 1-800-525-2579